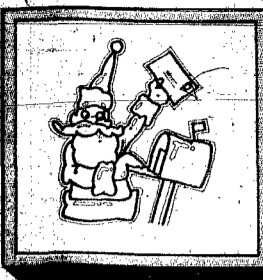


National Weather Service forecasts Friday through Sunday: Chance of snow Friday, partly cloudy Saturday and Sunday; Highs: 20s; Lows: 0-10.

Jennifer Schmits, 1st Grade
 St. Mary's School



Letters to Santa Claus

—page 9a



DECEMBER 1983						
S	M	T	W	T	F	S
-	-	-	-	1	2	3
4	5	6	7	8	9	10
11	12	13	14	15	16	17
18	19	20	21	22	23	24
25	26	27	28	29	30	31

ESU board evaluates administrator, discusses contract negotiations

The board of directors of Educational Service Unit 1, headquartered in Wakarusa, met in executive session for nearly one-half hour Tuesday night to discuss evaluation of Administrator Harry Mills.

Evaluation of the administrator is conducted each year.

While in executive session, the board also heard a report on contract negotiations for 1983-84.

Prior to the executive session, the board voted unanimously to change board policy regarding its monthly meeting date.

The board of directors of Educational Service Unit 1, headquartered in Wakarusa, met in executive session for nearly one-half hour Tuesday night to discuss evaluation of Administrator Harry Mills.

Evaluation of the administrator is conducted each year.

While in executive session, the board also heard a report on contract negotiations for 1983-84.

Prior to the executive session, the board voted unanimously to change board policy regarding its monthly meeting date.

Mills said information regarding the workshops has been sent to all superintendents of schools.

Mills also reported that ESU 1 is in the process of billing all schools for the second quarter on special education costs. He said an estimated \$248,500 will be collected during the second quarter.

MILLS ALSO reported on the Nebraska School Board's Convention and Nebraska Educational Service Unit Board Convention held last month in Omaha.

Members Dave Hay, Randy Shaw and Leo Kramer to a committee to look into the feasibility of purchasing an automobile or van for the service unit.

Mills sent letters last month to automobile dealers in the six county area served by ESU 1 regarding bids on a 1983 or 1984 automobile or van.

Although four bids were returned to ESU, the board tabled any action until a report is returned next month from the committee appointed by Hansen.

Board members also discussed a suggestion made by Hay to look into accepting bids from other financial institutions regarding the investment of ESU reserve funds.

Presently, all ESU funds are invested at the Wakarusa National Bank.

Board President Hansen said he would look into the matter and report back to the board next month.

Hay was not present at Tuesday night's meeting.

17 shopping days left

More than \$7,000 in merchandise, cash, gift certificates and shopping spree will be given away by Wayne merchants in this year's Christmas promotion.

Businesses kicked off the Christmas shopping season after Thanksgiving and have expanded store hours during the next couple weeks.

Seventeen shopping days remain until Christmas.

CUSTOMERS CAN register for prizes at any of these participating businesses.

Anchor National Financial Services, Annie's Ford-Mercury, Bill's GW, The Black Knight, Carhart Lumber Company, Charlie's Refrigeration, Coast to Coast, The Computer Farm, Coryell Derby, Country Nursery, Daylight Donuts.

The Diamond Center, Doescher Appliances, Eldon's Standard, Ellington Motors, First National Bank, Fredrickson Oil, Gay Theatre, Godfather's Pizza, Grless Rexall Pharmacy, Hazel's Beauty Shop, The Headquarters.

Johnson's Frozen Foods, Kauf's TV Sales & Service, Kids' Closet, Kuhn's Department Store, M & S Oil, Mike Perry Chevrolet Olds, Mine's Jewelers, Melodee Lanes, Mike Perry Chevrolet Olds, The Morning Shopper.

Northeast Nebraska Insurance Agency, Pamida, Ron's Hometown IGA, Rusty Nail, Sav Mor Pharmacy, The Shepherdess, State National Bank & Trust, Surber's, Swan's Apparel For Women, T & C Electronics, Timberline Wood Products.

Triangle Finance, Vakoc Building and Home Center, Wall to Wall Decorating, Wayne Book Store, Wayne Greenhouse, The Wayne Herald, Wayne Shoe Company, Wayne True Value, Wayne Vet's Club, Widner Feed & Seed.

Law requires another vote to be taken next month before changing the policy.

If approved, the board will meet the second Tuesday night of each month instead of the first Tuesday.

BOARD MEMBERS heard reports Tuesday night from Larry Clay, ESU psychologist, and Ron Hes, principal at Randolph High School, regarding a drug and alcohol training workshop held last month.

Clay and Hes, along with four other representatives of Randolph High School

and five representatives of the Wayne Career School district, attended the workshop Oct. 31 through Nov. 5 in Lake Geneva, Wis.

Cost of the drug-alcohol workshop and subsequent programs to be developed by each district is being supported by a \$12,832 federal grant written last spring by Clay.

"This conference was probably one of the best meetings I've ever attended as far as education is concerned," said Clay, who outlined the agenda during the week long program.

Hes, who outlined several steps which will be utilized to implement programs to reduce alcohol drug abuse in the Randolph community, thanked ESU and Clay in particular for making the conference available to his school.

The end result of this will be to make things better for our kids," Hes stressed.

The board voted to send two board members and Mills to the National School Board Convention scheduled March 31 through April 3, 1984, in Houston, Texas.

Board members also gave their approval for ESU Assistant Administrator Rodney Garwood to attend the National Convention of School Administrators slated Feb. 24-27, 1984, in Las Vegas, Nev.

IN OTHER BUSINESS, ESU Board President Claire Hansen appointed board

NEXT MONTH'S meeting of the board has been postponed one week. The board will meet Jan. 10 instead of Jan. 3.

Olympic flame

Wayne man selected to help with torch relay

When the Olympic Torch is carried 13,000 miles from New York City to Los Angeles this summer, a Wayne man will be helping.

Ken Berglund, manager of the local Northwestern Bell office, will be one of the drivers in the 29 unit vehicle caravan which will house, feed and provide medical care for the runners.

American Telephone & Telegraph will sponsor the relay. AT&T will have 150 runners among the field of 10,000 who will carry the torch from the East coast to the West coast.

Members of AT&T's Pioneers, a service organization, will run the vehicle caravan. Berglund has been a member of the Pioneers for more than 18 years.

THE OLYMPIC TORCH will leave New York on May 8 and the relay will continue across the country, ending 81 days later on July 28 at the Los Angeles Memorial Coliseum.

The last runner will use the torch to light the official cauldron to start the Olympic games.

Berglund said details on his participation have not yet been finalized but he said he has been informed he will be one of the drivers for one week.

He has not yet been told which week his aid will be needed or on which portion of the trip he will be driving. The Wayne man said he plans to use a week of vacation to help with the event.

The caravan will enter Nebraska at Omaha on June 23, continuing through LaPlatte, Murray, Union, Nebraska City, Julian, Auburn, Verdon and Falls City.

THE OLYMPIC Torch dates back to the first Olympic games in 776 B.C. when the winning athlete was allowed to light a sacred flame at Olympia.

The ceremony was revitalized in 1928 when a torch marked the entrance of the Olympic games in Amsterdam. In 1936, the first torch relay was held in conjunction with the Berlin games.

The 1984 torch relay is expected to be the longest relay in the history of the Olympic games. The torch will be carried through 1,500 U.S. cities and towns.

WSC schedules its Christmas concert Sunday

The Wayne State College concert choir and madrigal singers will present their annual Christmas Concert at 3 p.m. Sunday in Ramsey Theatre (Val Peterson Fine Arts Center).

The concert is free and open to the public. The theme for this year's concert is "The Light Is Promised." Steve Linn of Laurel will be organist/pianist and Kathy Oines of Albion will be flutist.

Solos will be performed by Don Fletcher of Valley, Tim Gansbaum of Osmond, Cindy Linder of Onawa, Iowa and Minda Zimmerman of Norfolk.

The narrator will be Doyle Anderson, a Wayne State College graduate who currently teaches vocal music at Albion High School.

Some music highlights of the concert will be "Oh, Holy Night," and the Hallelujah chorus from the "Messiah."

The concert choir and madrigal singers are under the direction of Wayne State College music professor Dr. Cornell Runestad.

Mittens, gloves still welcome

Wayne Mayor Wayne Marsh is still accepting new and used mittens and gloves today and tonight (Thursday) for the Mitten Tree he has planned.

The mayor will decorate a Christmas tree in the city's Centennial Christmas Tree Display Saturday and Sunday.

The mittens will then be distributed to the area's needy folks at Christmas to help warm some hands—both big and small.

Anyone who would like to donate new or used mittens or gloves to the drive should deposit them by tonight at First National Bank, State National Bank or City Hall collection sites.



DARK AND LIGHT objects form a contrasting image of winter in the countryside north of Wayne.



Santa says keep those letters coming

The first batch of letters to Santa Claus was picked up by the jolly old man last week and Santa said he would be stopping back at The Wayne Herald office again this week for more letters.

The Herald will continue to collect letters for Santa right up until Christmas eve. However, Santa reminded children to get the letters in soon so he and his elves will have enough time to finish collecting and making Christmas gifts.

St. Nick said he promises to read each youngster's letter carefully and try his best to see that everyone has a merry Christmas.

He said he and his elves are busy collecting and making gifts of all types. Some substitutions may have to be made, Santa said.

The Wayne Herald will collect all letters to Santa and print them in the newspaper. The first letters are printed in this edition of the paper.

Area youngsters should address the letters to: Santa Claus, c/o The Wayne Herald, 114 Main Street, Wayne, Neb. 68787. All letters should include names, ages and hometowns.

Photography: Randy Hascall

Winside couple marks 20th wedding anniversary

Mr. and Mrs. LeRoy Damme of Winside celebrated their 20th wedding anniversary with an open-house reception on Nov. 25 at their newly built home south of Winside.

Dammes were married Dec. 8, 1963. A buffet luncheon was served. The anniversary cake, baked and decorated by Mrs. Rick Davis of Carroll, was cut and served by daughter Kim Damme.

RELATIVES attending the event included the couple's three children, Kim, Kent and Kay.

Others attending were Mr. and Mrs. Byron Berg and Tara of Englewood, Colo.; Mrs. Ella Berg, Mrs. Ella Damme, Irene Damme and Mrs. Marie Suenl, all of Winside; Mr. and Mrs. Albert Damme, Mr. and Mrs. Carl Damme, Mrs. Lottie Schroeder and Sophie Damme, all of Wayne; Mr. and Mrs. Orville Prauner and Mr. and Mrs. Larry Prauner and Carrie, all of Battle Creek; Mr. and Mrs. David Plugge, Michelle and Kelly Jo, and Julius Plugge, all of Madison; Mr. and Mrs. Erwin Thewke of Albion; and Leona Heckman of Norfolk.

community calendar

THURSDAY, DECEMBER 8
Sunny Homemakers Club, Dorothy Dangberg, 1:30 p.m.
T and C Club, Mrs. Russell Lindsay, 2 p.m.

FRIDAY, DECEMBER 9
Wayne Federated Woman's Club
FNC Club Christmas meeting, Clara Echlenkamp.
Al Anon, Grace Lutheran Church basement, 8 p.m.

SATURDAY, DECEMBER 10
Redeemer Lutheran LCW Circles Christmas polluck dinner, noon.

SUNDAY, DECEMBER 11
Alcoholics Anonymous, Fire Hall, second floor, 8:30 a.m.

MONDAY, DECEMBER 12
VFW Auxiliary, Vet's Club room.
Minerva Club Christmas luncheon and gift exchange, Marjorie Olson, 12:30 p.m.

Acme Club, Mary Dorschner, 2 p.m.
Alcoholics Anonymous, Campus Ministry basement, 8 p.m.

Order of Eastern Star, Masonic Hall, 8 p.m.
Leather and Lace Square Dancers, Wayne State College Student Center, 8:45 p.m.

TUESDAY, DECEMBER 13
JE Club luncheon, Black Knight, 11:30 a.m.

Merry Mixers Club Christmas dinner, Blanche Backstrom, noon.
Klick and Klatter Home Extension Club polluck dinner and gift exchange, Phyllis Beck, 12:30 p.m.

Villa Wayne Tenants Club weekly meeting, 2 p.m.
Tops 782, Wayne Armory, 6:30 p.m.

Wayne County Jayceettes, Jaycee Hall, 7:30 p.m.
Grace Lutheran LWML Evening Circle, church basement, 8 p.m.

DAV and Auxiliary Christmas party, Vet's Club room, 8 p.m.

WEDNESDAY, DECEMBER 14
Villa Wayne Bible study, 10 a.m.

Grace Lutheran Ladies Aid carry-in dinner, 12:30 p.m.
United Methodist Women polluck luncheon, 12:30 p.m.

St. Paul's Lutheran Churchwomen covered dish Christmas luncheon, 1 p.m.

Tops 200, West Elementary School, 7 p.m.
Wayne Alcoholics Anonymous, Fire Hall, second floor, 8 p.m.

Al Anon, City Hall, second floor, 8 p.m.

THURSDAY, DECEMBER 15
Happy Homemakers Home Extension Club Christmas dinner, Dorothy Grone.

Immanuel Lutheran Ladies Aid carry-in Christmas luncheon, 12:30 p.m.

policy on weddings

The Wayne Herald welcomes news accounts and photographs of weddings involving families living in the Wayne area.

We feel there is widespread interest in local and area weddings and are happy to make space available for their publication.

Because our readers are interested in current news, we ask that all weddings and photographs offered for publication be in our office within 10 days after the date of the ceremony. Information submitted with a picture after that deadline will not be carried as a story but will be used in a cutline underneath the picture. Wedding pictures submitted after the story appears in the paper must be in our office within three weeks after the ceremony.

Observing 92nd year

Frank Marten of Hoskins will observe his 92nd birthday on Sunday, Dec. 11.

Marten, who lives alone, occupies his time with his many hobbies, including making wren houses out of gourds, and miniature pincushion rocking chairs from snap clothespins.

He also makes mirrors using old horse collars, and table lamps and other items from Popsicle sticks.

During the summer, Marten spends much of his time tending his flowers and garden.

briefly speaking

Altona Ladies Aid meets

Altona Lutheran Ladies Aid met for a Christmas luncheon Dec. 1 with husbands as guests.

A brief business meeting was conducted by Mrs. Les Youngmeyer.

Mrs. Alvin Daum and Mrs. Delvin Mikkelsen presented a program of readings and Christmas carols. Secret sisters were revealed with a gift exchange.

Hostesses were Mrs. Jim Youngmeyer and Mrs. Les Youngmeyer.

Recital features Hoskins pianists

Mrs. Jeanne Anderson presented her piano students in a recital Dec. 2 at Hoskins Public School.

Students performing, with parents' names in parentheses, included Jason Gillespie (Colby), Melissa Miller (Jim), Jenny Mueller (Gene), Jennifer Severson (Larry), Ann Meierhenry (Melvin), Dustin and Jennifer Puls (Dallas), and Sharmin Allen (Terry).

JASON Gillespie and Sharmin Allen gave a demonstration on

finger exercises, and Jennifer Puls gave a demonstration on scales.

Several Christmas selections were presented, including a duet, "Jolly Old St. Nicholas" and "Jingle Bells" by Mrs. Anderson and Jennifer Severson.

Mrs. Dallas Puls and Dustin also played a duet, "Jolly Old St. Nicholas" and "Jingle Bells."

The audience joined in singing "Silent Night," accompanied by Jason Gillespie.

Cake and punch were served at the close of the program.

Open house in Laurel

Paul Gade of Laurel will be honored at an open house reception on Sunday, Dec. 11 in observance of his 80th birthday.

All friends and relatives are invited to attend the event from 2 to 4 p.m. at his home, 206 Elm St. in Laurel.

Monogrammed Gifts are sure to please

PERSONAL STATIONERY
"The Gift Supreme"

NAPOKINS imprinted with initials or name

BOOK MATCHES monogrammed

WAYNE HERALD
WAYNE, NEBRASKA 68107

DONALD E. KOEBER, O.D. LARRY MAGNUSON, O.D.

Doctors of Optometry
313 Main St. Wayne, Nebr. 68787

COMPLETE VISION SERVICE
CONTACT LENSES
Conventional Hard Lenses and Soft Lenses

For Appointment Call 375-2020

Convenient parking beside and in rear of office.
Members of American Optometric Association

LES' STEAKHOUSE

375-4774 Wayne, NE

SUNDAY NOON & NIGHT

Smorgasbord 2 Meats, Potatoes, Rolls & Drink \$4.95

MONDAYS CLOSED OR OPEN FOR PRIVATE PARTIES

TUESDAY NIGHT

Special All Meals 75¢ Off Reg. Price

WEDNESDAY NIGHT

Spaghetti \$2.95

THURSDAY NIGHT

Bar-B-Que Ribs, Fries, Salad Bar \$3.95

FRIDAY NIGHT

Fish and Sirloin Tips \$3.75

SATURDAY NIGHT

Prime Rib \$7.95

Baltone

REGULAR HEARING AID SERVICE CENTER

Professional Sldg. Friday, December 9 10:00-11:00

Please feel free to come in no matter what kind of hearing aid you have, or what your hearing problem may be. We'll be happy to answer your questions and do everything we can to help you hear better. We also have factory-fresh Baltone-brand batteries, repairs and accessories available for most makes.

If you can't come in, we'll come to you. Just call us 712-258-1960.

521-12th St. Sioux City, Iowa 51105

PAMIDA

AN EMPLOYEE OWNED COMPANY
East Hwy. 35 - Wayne, NE

HOURS:
Monday through Saturday 9-9
Sunday 11-6



1.39 6-Pak Limit 1 Case
All 6-Pak Pop. Choose from Coke, Diet Coke, 7-Up, Diet 7-Up, Pepsi, Diet Pepsi, Mt. Dew and more.



12.99 Reg. 14.99
Baby That-a-way. She's 15 in. tall and crawls everywhere and you can teach her how to walk. Pick her up and she fusses because she loves to go. 7231.



2.94
Christmas wrapping paper, with 100 sq. ft. 36 in. wide. Comes with 12 color coordinated bows in the tube. Assorted popular holiday designs.

3 DAYS ONLY

FRI-SAT-SUN



59.99
Hoover Spirit portable canister vacuum. Light in weight, easy to carry. Pulls in dirt, grit and litter. Saves space, too. S3247



21.99
12 in. tricycle. Candy apple red finish with white trim. Playsafe edges. G716.

Week-end best buys



5.99
42 pc. 1/4 and 3/8 in. drive combination ratchet socket set. With 2 spark plug sockets. Chrome plated.



21.99
Presto Fry Daddy deep fryer. Fires 4 servings with only 4 cups of oil. Model #FD-400. 05420.



11.98
Walnut finished bar stool with padded seat, 11 1/2 x 11 1/2 x 30 in. tall. Great for your family room.



12.99
#7040 Ages 1 1/2 & over. Reg. \$14.99

Quantities limited. PAR program does not apply. — No dealer sales.

Cats make up blizzard game, pummel Doane

The Wayne State Lady Wildcats basketball team made up a game with Doane College Monday night that had been postponed because of the recent blizzard — but this time the Cats didn't get snowed under, and dumped the Tigers 68-55.

The Wildcats jumped to an early lead and never trailed. The closest Doane got was 13-12 at the 11-minute mark in the first half.

If one aspect of the game proved crucial, it was fouls. The Cats were charged with 17 team fouls, but Doane only hit on 7-of-13 attempts while the Cats were 20-of-26 from the charity stripe off of 19 Tiger fouls.

Both teams shot poorly from the floor — Wayne State hitting just 24-of-63 shots (38 percent) and Doane 24-of-69 (34 percent).

The Cats, aided by their free-throw shooting, led 42-31 at the intermission, and went out in front by as many as 16 points more than once in the second half.

Wayne State also enjoyed a fine night on the boards, pulling down 42 rebounds. The Wildcats only had 14 boards in the second half, but 7 were offensive.

Wayne State senior Carol Durkee had one

of her better nights as a Wildcat, racking up 16 total points and pulling down 10 rebounds.

Teammate Barb Wragge also had 10 boards and accounted for 7 points.

Several other Cats helped to spread the points around. Forward Shelle Tomaszewicz totaled 10 points as did Barb Wragge. The two had 5 and 10 rebounds respectively. Sophomore Deb Nygren continued on her tear, adding 10 points and 9 carsoms.

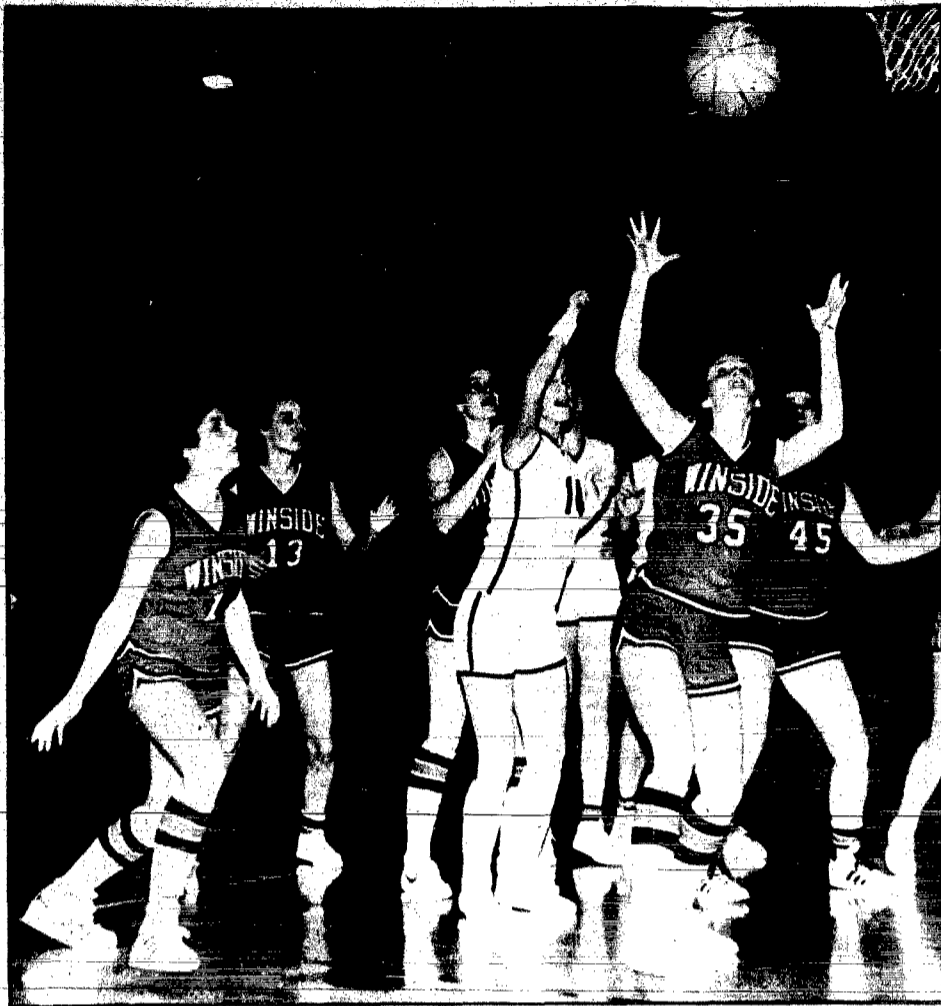
Pattie Laughlin added 11 points from her forward spot while Vian Kelly tallied nine.

The win put the Wildcats at 2-3 on the season while the Tigers fell to 4-4.

Wayne State was scheduled to play Hastings College last night (Thursday). The Wildcats were out to avenge a 109-102 defeat at the hands of the Broncos in the District 11 Classic at Fremont in the opening game of the season.

The Cats will play host to Mount Marty College Friday night at Rice Auditorium in a 7:30 p.m. contest. Mount Marty brings a 5-1 record into the game, the Lady Lancers

Wayne State	42	26-48			
Doane	31	24-55			
WSC	Shots	FT	PTS	RB	FL%
Thompson	0-0	0-0	00	00	00
Tomaszewicz	3-7	4-5	10	5	3
Laughlin	5-10	1-2	11	2	8
Carney	0-2	0-0	00	1	00
Kelly	3-9	3-3	9	2	2
Shultz	1-1	1-2	3	00	2
Todd	1-6	0-0	2	3	1
Durkee	6-11	4-5	16	10	3
Wragge	2-8	3-4	7	10	3
Krohn	0-0	0-0	00	00	00
Nygren	3-9	4-4	10	9	1
Totals	24-63	20-26	68	42	17
Doane	24-69	7-13	55	42	19



WINSIDE'S SHELLI Topp (35) goes after a rebound as Laurel's Wendy Robson moves in. Photography: Judi Topp

Cold Cats Bears scratch Cats

It was a matter of making the shots fall. That's what the Laurel Bears girls basketball team did Tuesday night as it downed the Winside Wildcats 50-17. The Bears only hit 21 (out of 55) shots from the floor, but that compared favorably to the Cats, who made only 6 buckets all night.

"We were getting the shots, but they just weren't going in," said Winside head coach Don Leighton.

The Wildcats jumped out in front 9-6 in the early going, but then went stone cold as Laurel took a 43-12 halftime lead.

The Bears changed to a man to man defense from their full-court press to start the second half, and the Cats only managed 5 points for the rest of the game. — 1 in the third period.

If Winside had a high point in the loss, it was rebounding.

"Anytime you get 30 rebounds against a taller team you have to be pleased," Leighton said. "Of course 21 turnovers didn't help us."

Laurel coach Gale Hamilton said his Bears can play better.

"We had different people playing well in different areas," he said. "We just never got everybody all together."

The Bears were paced by Jean Lute's

game high 17 points, and 8 rebounds. Wendy Robson added 11 points and pulled down 13 boards to lead the Bears' white teammate Renee Vanderheiden accounted for nine points and 11 rebounds.

Winside was paced by Shelli Topp's 3 points and 12 rebounds.

"Shelli played a real good basketball game," Leighton said. "I really have to put her on the back."

Teammate Pam Peter also had 4 points and added 3 rebounds.

Leighton was able to see the positive side of the loss.

"We learned some things," he said. "We're going to come back and win some games."

In reserve action, the Wildcats broke a losing streak that stretched back to the 1981-82 season, and downed the Bears 17-14 in overtime.

Lana Prince had 6 points for Winside, a coming in the overtime period. Teammates Kay Michler and Teressa Brudigan each tallied 4.

Winside will try to rebound tonight (Thursday) when the Cats travel to Newark, Mo. while the Bears play host to Allen-

Laurel	14	20	6	10-50	
Winside	9	3	1	4-17	
Laurel	J. Lute	8	25	5	18
	C. Dahlquist	3	1	2	7
	R. Vanderheiden	4	12	2	9
	W. Robson	4	15	1	11
	M. Joslin	0	0	1	1
	D. Sherry	0	1	2	1
	G. Twiford	1	0	2	1
	S. Adkins	1	0	0	2
	D. Westadt	0	0	0	0
Name	00	00	00	00	00
Totals	21	8	17	14	50
Winside	6	5	12	14	17
Winside	Ta. Brudigan	1	0	2	2
	K. Leighton	1	0	2	2
	L. Jensen	1	0	0	2
	Te. Brudigan	0	0	0	0
	T. Topp	1	0	2	2
	K. Meierhenry	0	0	3	0
	S. Topp	2	0	3	4
	M. Jensen	0	1	1	1
	P. Peter	0	4	6	4
	J. Brockman	0	0	0	0
Totals	6	5	11	14	17
Laurel	21	8	17	14	50

1-1 mark Eagles play Jekyll & Hyde

The Allen Eagles played Doc Jekyll and Mr. Hyde this past week, opening the season with a 48-36 win over Wynot last Saturday, but dropping a 44-38 decision to Ponca on Tuesday night.

Against Wynot, the Eagles ran into an aggressive Blue Devil squad that racked up 29 fouls.

"We got in the one and one right away," said Allen coach Gary Troth. "They (Ponca) were brutal and real aggressive."

The Eagles trailed 19-15 at the half, but three quick buckets by Tami Jewell and Pam Heckathorn put Allen in the lead to stay after they outscored Ponca 18-4 in the third period.

"We played good defense in the first and third quarters," Troth said.

Troth added that the Eagles made their fair share of mistakes in the contest.

"We had a lot of first game jitters," he said. "We were getting shots in the first half but just

weren't putting it through the hoop.

"We had a few individual mistakes and didn't check out on the boards like we should have — we'll have to work on that."

Troth said Allen found some much needed bench strength.

"We got just a little tired," he said. "They used a lot of people because they got into foul trouble."

"We used a lot of people, which is a little new for us."

Leading the Eagles against the Devils was Harder, who accounted for 18 points and pulled down 12 rebounds. Teammate Jewell added ten points and four boards while Deanna Hansen, Mary Oswald and Heckathorn each had 5 points.

In junior varsity action, the Eagles lost to Wynot in double overtime, 34-30. Kris Blohm led the way with 15 points.

The Ponca game saw Allen take a 17-15 halftime advantage in a see saw game. The contest

Allen	48	36			
Wynot	44	38			
T. Jewell	5	0	1	3	10
M. Harder	3	12	17	3	18
D. Hansen	2	1	3	1	5
J. Warner	1	1	3	2	3
K. Rahn	00	00	00	3	00
M. Oswald	1	3	4	1	3
P. Heckathorn	2	1	4	4	5
S. Boyle	1	0	0	1	2
D. Magnuson	0	0	3	1	0
Totals	00	00	00	00	00
Wynot	14	8	16	29	36

GAY THEATRE

Xmas Gift Certificates & Movie Posters for sale.

Free Holiday matinee at 2 p.m. Sat., Dec. 10th

The NEW Adventures of ELSA's Cabal

LIVING FREE!!

Starts Dec. 16th... A CHRISTMAS STORY

A Tribute to the Original All-American Christmas... MOM UA [Logo]

Tom Cruise

Nightly 7:20 p.m. Late Show Fri.-Sat. & Tue at 9:10 p.m. Bargain Night Tue.

He's got to make all the right moves.

Tom Cruise, star of Risky Business

All The Right Moves

Why do you need homeowners insurance if you're just renting?

What have you got to lose?

Sure, if something happens to the home or apartment you're renting, someone else pays for the structural damage.

But who pays for the loss of your possessions? Who pays for your furniture and clothing, your TV, stereo, and more?

Who pays? YOU DO, if you're not covered by a homeowners policy for renters. At Auto-Owners. We can protect your rented home or apartment against everything from fire to water damage, from wind to theft. We'll even pay your additional living expenses elsewhere if you must move during the repair period. All in one low-cost policy.

So talk to us at Auto-Owners. What have you got to lose?

ANDY'S PIZZA HOUSE

WILL REOPEN THURSDAY, DEC. 8 — 5 P.M.

Lindsay's Generation 2

You Have Read About It — People Are Talking About It

Let **Petersen & Son, Inc.** Diamond, Nebraska 68765 — (402) 748-3388

Unveil the Revolutionary Generation 2 Pivot to You on **Tuesday, December 13, 1983**

At Our Offices in West Osmond

10 a.m. to 1 p.m. — We will be serving barbecue beef
1:30 p.m. — Demonstration of the new planetary gearbox Film on new Generation 2 System

Our Generation 2 Could Be Worth An Extra \$20,000 To Your Next Generation Too!

Visit us at our new location...

Our Generation 2 Could Be Worth An Extra \$20,000 To Your Next Generation Too!

Each \$5,000 Beated Lasso and Counter All Day

Place your order now on this top-notch, herbicide and insecticide combination and SAVE with special early season rebates!

Coufiter — 50 per lb.
Lasso — 50¢ per gal.

Each \$5,000 Beated Lasso and Counter All Day

Qualifies You and Your Wife Per 1 Registration Per Ft

FREE Trip to Las Vegas

Mayans — 3 Nights Lodging

Booths and Displays Only

Which Buildings Superior Grain Bins S.P.T. Unit Drive Satellite TV Dish Furnishings of Grain Solar Panels

HEY KIDS!

Enter Our Coloring Contest

Come in and pick up your picture of Santa, color it and bring it back to Taco del Sol.

Weekly winners in 2 age groups
7 years and under — 8 years-12 years
2 winners every Friday until Christmas, one from each age group

Prizes — An Hombre Meal of our choice.

NO PURCHASE NECESSARY

ENTER NOW!

TACO del SOL

Open 11 a.m.-11 p.m. Daily in the Mineshaft Mall
112 East 2nd
373-4347

Auto-Owners Insurance

You can't find a better name for homeowners insurance.

Northeast Nebraska Insurance

111 West 3rd
Phone 373-2664
Wayne, Nebraska

SERVING YOU

THURSDAY AND SATURDAY EVENINGS Prime Rib Dinner

FRIDAY EVENINGS Fish and Chicken Buffet w/ Salad Bar

SUNDAY — Champagne Brunch 10 a.m. to 1:30 p.m.

SUNDAY EVENING — Oriental Dinner Along with Regular Menu

Serving Noon Buffet and Lunches w/ Sandwich and Salad Bar Specials

TUESDAY EVENINGS — Spaghetti Dinner

WEDNESDAY — Large choice of entrees of Mexican food or a 3-Meat Buffet (BBQ ribs, ham and chicken) for \$5.25.

The Hotel

Wakefield 287-9026

We are now taking reservations for Christmas parties

Letters to Santa



Dear Santa,
I would like a new bike with training wheels. I promise to put it away every day. Please bring me a book with easy words so I can read it.
I love you, Santa!
I am really trying to be a good girl and listen to Mom and Dad.

Thank you,
Kate Samuelson, 4
Wayne

Dear Santa:
I want a space patrol walkie talkie. I already got only one and I want a video camera so my dad can put me on TV next year when I am in the Middle School playing the flute. I want an alarm watch. And I really want a chemistry set. A talking Sylvester the cat. I want Zaxxon. I want QBert and Zaxxon arcade games. And I want a remote control car. I want a rock polisher and a microscope. And an electronic experiment set. I want a Blackstone magic set. And I also want a Digital Derby. And I want a Snoopy and Popeye Nintendo game. And I really want a magic wand speak and learn. And I want the childrens discovery system. I want Hyper Chase. And I really want a Casino King slot machine bank.

Love,
Nathan Tompkins
Wayne

To Santa,
Hi, How are you?
Well, to start out lets give Mom some perfume and Dad a tie and my sister a doll.
For me just a barbie and a care bear sleeping bag, and a care bear, please and a care bear watch.
Well, time to say goodbye. Soooo-bye.
Love,
Sara Granberg, 8
Wayne.
P. S. and some other things in my stocking.

Dear Santa,
My bike is gone. I left it outside one night. So meone took it. Santa, I wish for a new bike, please.
If you bring me a new bike, I promise I will put it away every night and every day. The End.
Thank you.

Love,
Carl Samuelson, 6
Wayne



Dear Santa Clays,
What I want
for Christmas is
Shoulder pads.
Wesley Blecke.

Rt 1
Wakefield
68784

Dear Santa,
I have been a good girl this year.
I make cookies for Dad.
I will like anything you want to bring me for Christmas.
My sister Tina wants a strawberry shortcake baby doll. My brother Terry wants a maintainer. Please bring Tim and Tom something too.
Love,
Tammy Sievers, 8

Dear Santa,
This is a letter to tell you what we want for Christmas.
I would like...6x6, pool table, video games, stomper mountain, pumper, 4x4 stomper, and an electric tooth brush.

Jeremy Sturm, 7
Robbie Sturm, 2
Wayne

Dear Santa,
My name is Kandi Sue Anderson. I am 3 years old. My mommie is writing this letter for me. I've tried to be a good girl this year, sometimes I have trouble being good though.
I help my mommie clean house and water plants. I stay with my grandma while Mommie goes to school, and then I help my grandma.
For Christmas I would like to have a baby, some new clothes to wear to nursery school, a baby bottle for my babies and some new earrings.
I will leave cookies and hot chocolate for you (I helped my mommie bake cookies) on Christmas Eve.

Love always,
Kandi Sue Anderson, 3
Wayne

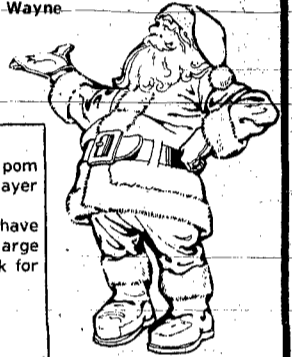


Dear Santa,
I am trying to be a good boy now that you are peeking in under the window. I am wearing my pajamas to bed too.
I want some more Leggo Blocks like the ones Nancy gave me. I want some Star Wars Collections too. I would like some cars that go by themselves and a Care Bear. If you brought me some guns I will point them only at trees.
Do you know I have a baby sister? She wants a Care Bear too. If that's all you bring her I will let her play with my toys.
My Grandpa wants some pajamas like mine but only bigger. He wants some dollar bills too.
That's all I want for Christmas. I am ready for you to come. I love you. Thank-you!

Love,
David Boehle, 3 1/2
Wayne

Dear Santa,
Could you bring me a doll, pink shoes, and pom poms? My brother and I would like a record player and Big Wheels cycles.
Daddy would like a weight bench, but you'll have to put it on our porch. Our chimney isn't large enough. My mom will have cookies and milk for you and carrots for your reindeer.
Thank you and Merry Christmas.

Hailey Daihnke, 3 1/2
Casey Daehnke, 2



church services

CHRISTIAN LIFE ASSEMBLY
(Lloyd Gordon, pastor)
Sunday: Sunday school, 9:45 a.m.; worship, 10:45; evening worship, 7:30 p.m.
Wednesday: Evening worship, 7:30 p.m.

Sunday: Worship, 9:30 a.m.; coffee and conversation, 10:30; church school, 10:45; father/son banquet, 6:30 p.m.
Monday: Mens prayer breakfast, 6:30 a.m.
Wednesday: United Methodist Women potluck Christmas dinner, 12:30 p.m.; junior and youth choirs, 4.

Sunday: Bible educational talk, 9:30 a.m.; Watchtower study, 10:20.
Tuesday: Theocratic school, 7:30 p.m.; service meeting, 8:20.
For more information call 375-2396.

ST. ANSELM'S EPISCOPAL CHURCH
1006 Main St.
(James M. Barnett, pastor)
Sunday: Morning prayer, 10:30 a.m.

WAKEFIELD CHRISTIAN CHURCH
(Marly Burgus, pastor)
Thursday: Wayne Bible study, 9:30 a.m.
Sunday: Bible school for all ages, 9:30 a.m.; worship, 10:30; youth Bible bowl in Omaha; choir, 6 p.m.; caroling and Burgus' open house, 7.

EVANGELICAL FREE CHURCH
1 mile East of Country Club (Larry Ostercamp, pastor)
Sunday: Sunday school, 9:45 a.m.; worship, 11; evening service, 7 p.m.
Wednesday: Bible study, 7:30 p.m.

GRACE LUTHERAN CHURCH
Missouri Synod
(Jonathan Vogel, pastor)
Thursday: Grace bowling league, 7 p.m.
Saturday: Christmas program practice, 9:30 a.m.

REDEEMER LUTHERAN CHURCH
(Daniel Monson, pastor)
Thursday: Mens study group, 7 a.m.
Saturday: Sunday school Christmas program practice, 9 a.m.; ninth grade confirmation, 9 a.m. to noon; Lutheran Churchwomen Christmas potluck dinner, 12:30 p.m.
Sunday: Early service with childrens sermon, kindergarteners through second graders will not sing, 8:30 a.m.; Sunday school and adult forum, 9:45; late service, 11.
Monday: Church council, 8 p.m.
Tuesday: Ladies study group, 6:45 a.m.
Wednesday: Seventh and eighth grade confirmation, 6 p.m.; choir rehearsal, 7; Brotherhood meeting, 8.

ST. MARY'S CATHOLIC CHURCH
(Jim Buschelman, pastor)
Thursday: Mass, 8:30 a.m.
Friday: Mass, 7 a.m.
Saturday: Mass, 6 p.m.
Sunday: Mass, 8 and 10 a.m.
Monday: Mass, 8:30 a.m.
Tuesday: Mass, 8:30 a.m.
Wednesday: Mass, 8:30 a.m.

Monday: Wakefield Ministerium, 10 a.m.; prayer power, 7:30 p.m.
Tuesday: Wakefield ladies Bible study, 7:30 p.m.; Wakefield area Bible study, 8; Wayne area Bible study, 8; Emerson-Pender-Thurston area Bible study, 8.
For information and/or transportation call Ron Jones, 375-4355.

FAITH EVANGELICAL CHURCH
Wisconsin Synod
(Wesley Bruss, pastor)
Sunday: Worship, 8:30 a.m.; Sunday school, 9:30.
Wednesday: Confirmation class, 4 p.m.

Sunday: The Lutheran Hour, broadcast KTCH, 7:30 a.m.; Sunday school and Bible classes, 9; worship with holy communion, 10; LYF "Tree and Treats," 2 p.m.; information class, 8.
Monday: Evangelism committee, 7 p.m.; church council, 8.
Tuesday: Gamma-Delta, 7 p.m.; LWML Evening Circle, 8.
Wednesday: Men's Bible breakfast, 6:30 a.m.; Ladies Aid carry-in luncheon, 12:30 p.m.; junior choir, 7; midweek school and confirmation, 7:30; senior choir, 8.

THEOPHILUS UNITED CHURCH OF CHRIST
(Gail Axen, pastor)
Sunday: Worship, 9 a.m.

UNITED PRESBYTERIAN CHURCH
(Robert H. Haas, pastor)
Sunday: Choir, 9 p.m.; annual Chrismson service, 9:45; coffee and fellowship, 10:35; church school, 10:50.
Wednesday: Choir, 7 p.m.

WESLEYAN CHURCH
(Dixon Main, pastor)
Sunday: Sunday school, 10 a.m.; worship, 11; Bible study, 7 p.m.; evening worship, 7:30.
Wednesday: Prayer meeting, Bible study, CYC and youth meeting, 7:30 p.m.

FIRST BAPTIST CHURCH
(Gordon Granberg, pastor)
Sunday: Sunday school, 9:30 a.m.; coffee fellowship, 10:30; worship, 10:45.
Wednesday: Prayer meeting and Bible study, 7 p.m.

IMMANUEL LUTHERAN CHURCH
Missouri Synod
(Steven Kramer, pastor)
Friday: Conquassing committee, 7:30 p.m.
Sunday: Sunday school, 9:30 a.m.; worship with communion, 10:30 (note change of time).
Monday: Ministerium, 10 a.m.
Wednesday: Confirmation, 4:15 p.m.

wayne senior citizens

georgia janssen, coordinator

FIRST CHURCH OF CHRIST
(Christian)
1110 East 7th
(Kenny Cleveland, pastor)
Sunday: Bible school, 9:30 a.m.; worship, 10:30.
Tuesday: Almond Joy Circle, 7:30 p.m.
Wednesday: Bible study, 7:30 p.m.

INDEPENDENT FAITH BAPTIST CHURCH
208 E. Fourth St.
(Bernard Maxson, pastor)
Sunday: Sunday school, 10 a.m.; worship, 11; evening worship, 7:30 p.m.
Wednesday: Bible study, 7:30 p.m.
For free bus transportation call 375-3413 or 375-2358.

CONTINENTAL BREAKFAST
A continental breakfast was served Monday morning at the Wayne Senior Citizens Center, with 30 seniors attending.
Kitchen helpers were: Melba Grimm, Mable Sundell and Gladys Petersen.
A business meeting followed and was called to order by President Viola Lawrence.
Members voted to have a New Year's card party and soup supper on Dec. 30. Beef vegetable soup will be served.

afternoon. There were 20 in attendance.
Popcorn balls were made at the center Tuesday for a party Wednesday with youngsters of the special education class at Wayne Middle School.
Workers were Alma Splitigerber, Mary Hansen, Lucille Wert and Gladys Petersen.

SENIOR CALENDAR
Thursday, Dec. 8: Senior bowling, 1 p.m.; film, 1:30 p.m.; library hour, 2 p.m.
Friday, Dec. 9: Christmas dance and gift exchange, cooperative lunch, 2 p.m.
Monday, Dec. 12: Bible study, 1:30 p.m.
Tuesday, Dec. 13: Guest Day, senior bowling, 1 p.m.; December birthday party, 1:30 p.m.
Wednesday, Dec. 14: Keeping in shape, 1 p.m.
Thursday, Dec. 15: Senior bowling, 1 p.m.; Oglethorpe netta Wortman to speak, film, 2 p.m.

FIRST TRINITY LUTHERAN CHURCH
Allona
Missouri Synod
(Ray Greenseth, pastor)
Sunday: Worship, 9 a.m.; Sunday school, nursery through adult, 10.
Wednesday: Ladies Bible study, 9:15 a.m.; seventh grade catechism, 4:15 p.m.

JEHOVAH'S WITNESSES
Kingdom Hall
416 Grantland Rd.
Thursday: Congregational book study, 7:30 p.m.

CURRENT EVENTS
Gladys Peterson chaired a current events session Tuesday

There will be a gift exchange, and Otto Field will play for the afternoon dance.

LES' STEAKHOUSE
375-4774 Wayne, NE
Join us for our Holiday Meal Sunday, December 6
Serving Turkey and ALL THE TRIMMINGS for \$4.95
Have a Merry Christmas and Happy New Year from all of us at Les' Steakhouse

Benefit for Casey Troy Anderson
Friday, December 9
Starting at 7:30 p.m.
Quonset on East end of Main St. in Laurel.
Lunch and refreshments will be served.
Auction to be held at 8:30
A few of the items donated for the auction are
CABBAGE PATCH DOLL
Child's toy gun
Fish fry for two at Heese's Bar in Belden
Child's toy Case tractor
Full size blanket
Curling iron
Child's pool table
Steak supper for two at Les' in Wayne
One bowling ball
Sunday brunch for two at The Hotel in Wakefield
Curling iron
Leg warmer and mitten set
Laundry basket
"Annie" lunch bucket
2 free games of bowling
T-bone supper for two at Ron's in Carroll
Soup tarrens
First Alert fire alarm
Blow dryer
Candy, Nebr. hat
Digital watch
Anyone wishing to donate items for the auction call 584-2469 or 375-2932

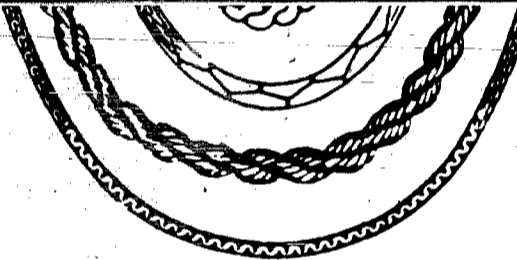
ANNA SEZ
Hi Everyone!
High mounds of snow surround the home these days.
Welcome to Edna Tietgen, Marietta Waller and Ruth Perry! Hope you enjoy your stay with us.
Deepest sympathy goes out to the families of Herman Brackman, Maude Auker and Alma Maman. We will miss them.
Get well wishes go out to Ellen Hansen and Herman Peters who are hospitalized at this time at Providence Medical Center.
Among the activities at the home are Rhythm Band on Tuesday afternoons. On Wednesday afternoons we play cards and dominos.
There's Special prayer service at 7 p.m. on Wednesday evening. Presbyterian communion on Wednesday, Dec. 14 at 10 o'clock. On Dec. 21 we will have a Christmas slide show of the nativity and the birthday party.
On Dec. 8 we will have our annual pancake supper given by the Kiwanis Club for our friends and relatives. On Thursday, the Senior Citizens come to entertain us on the first and third Thursdays of the month.
We have bingo on Friday afternoons and sing-a-longs on Saturday afternoons.
Some of the residents are occupied with their sewing and patchwork.
The St. Mary's ladies come the second Monday, Dec. 13 with treats and the Altona ladies come on Wednesday, Dec. 16 with treats. The Redeemer ladies come on the second Thursday of the month. The Grace ladies come on the third Monday of the month with treats as do the Presbyterian ladies on the last Wednesday with treats each.
There will be 7 children raised around the birthday table on Dec. 21. Bone Hatter, Dec. 4; Elmer Peterson, Dec. 9; Mabel Swanson, Dec. 12; Ella Bledsoe, Dec. 25; Helga Schwede, Dec. 18; Lena Swanson, Dec. 23; Mae Marston, Dec. 23.
The birthday song will be sung. Also on this day we will have our Christmas party with Santa Claus on hand to give out gifts to all and there will be treats.
WAYNE CARE CENTRE
916 Main 375-1922

\$500,000.00

STOCK REDUCTION SALE

Greatest Store-Wide Sale In Our History

 <p>14K Yellow Gold .75 ct. 19-Diamond Dinner Ring Regular \$1,150.00 \$575⁰⁰</p>	 <p>14K Yellow Gold 1/3 ct. Diamond Solitaire Ring Regular \$1,833.00 \$517⁵⁰</p>	 <p>Yellow Gold 3-Piece Engagement Ring and Wedding Band Set Regular \$504.00 \$252⁰⁰</p>	 <p>Marsala Diamond Ring Regular \$1,150.00 \$1075⁰⁰</p>	 <p>14K White Gold Ladies Diamond Promise Ring Regular \$110.00 \$55⁰⁰</p>
 <p>10K Yellow Gold .30 ct. Men's Solitaire Diamond Ring Regular \$295.00 \$397⁵⁰</p>	 <p>14K Yellow Gold .08 ct. Diamond Engagement Set Regular \$460.00 \$230⁰⁰</p>	 <p>14K Yellow Gold 1/3 ct. 19-Diamond Dinner Ring Regular \$1,150.00 \$745⁰⁰</p>	 <p>14K Yellow Gold Ladies Sapphire and Diamond Ring Regular \$350.00 \$175⁰⁰</p>	 <p>Opal and Diamond Dinner Ring Regular \$430.00 \$217⁵⁰</p>



14K Solid Gold CHAINS & BRACELETS

MEDIUM SERPENTINE

7" Medium Serpentine Bracelet
Regular \$44.95 **\$21⁹⁹**

16" Medium Serpentine Neck Chain
Regular \$90.00 **\$44⁹⁹**

24" Medium Serpentine Neck Chain
Regular \$135.00 **\$66⁹⁹**

30" Medium Serpentine Neck Chain
Regular \$169.95 **\$83⁹⁹**

MEDIUM HERRINGBONE

7" Herringbone Bracelet
Regular \$59.95 **\$28⁹⁹**

18" Herringbone Neck Chain
Regular \$139.95 **\$69⁹⁹**

LIGHT SERPENTINE


16" Light Serpentine Neck Chain
Regular \$31.95 **\$14⁹⁹**

18" Light Serpentine Neck Chain
Regular \$33.95 **\$16⁹⁹**

20" Light Serpentine Neck Chain
Regular \$39.95 **\$18⁹⁹**


24" Light Serpentine Neck Chain
Regular \$75.00 **\$37⁵⁰**

14K Solid Gold DIAMOND PENDANTS



0.25 Carat Diamond Regular \$45.00	\$22⁹⁹
.05 Carat Diamond Regular \$109.00	\$52⁹⁹
.10 Carat Diamond Regular \$209.00	\$101⁹⁹
1/5 Carat Diamond Regular \$418.00	\$209⁹⁹
1/4 Carat Diamond Regular \$579.00	\$285⁰⁰
3/8 Carat Diamond Regular \$1207.00	\$724⁰⁰

14K Solid Gold DIAMOND EARRINGS




0.2 Carat Total Weight Regular \$44.00	\$28⁹⁵
.05 Carat Total Weight Regular \$105.95	\$52⁵⁰
.10 Carat Total Weight Regular \$150.00	\$75⁰⁰
1/4 Carat Total Weight Regular \$450.00	\$270⁰⁰
1/2 Carat Total Weight Reg. \$1230.00	\$738⁰⁰
3/4 Carat Total Weight Reg. \$1770.00	\$1062⁰⁰



Complete Stock Ladies & Mens Colored Stone Rings

40% Off

All Watches



25% to 50% Off

From \$29 and up...



LOOSE DIAMONDS

Largest Selection In Our History


All 40% Off



Diamond Engagement Rings

30% Off

Large Group 14K Solid Gold Pierced Earrings



40% Off



Complete Stock Silver - Crystal - Pewter

All 20% Off

The Diamond Center



211 MAIN
PHONE 402/375-1800



Sheep industry has room for improvement

Despite a drop in sheep and lamb numbers in 1983 compared to a year ago, prospects are guardedly optimistic for producers who are excellent managers. And while a lot of things are being done right in the industry, there's room for improvement in many areas in the production, marketing and processing chain.

This seemed to be the underlying message coming from a Sheep Symposium held here recently, with the focus on "marketing your product." A good representation of Nebraska and a scattering of out-of-state producers talked, questioned and ate sheep products in a spirited two-day conference.

Interest in presentations by a number of experts seemed insatiable, as intense but enthusiastic producers pelted speakers with questions about problems running the gamut of wool and meat production.

The symposium, ramrodded by University of Nebraska extension sheep specialist Ted Doane, included a split session marketing panel. The first half, a relatively rare evening session, zeroed in on marketing various types of sheep — feeder lambs, old ewes, buck and heavy lambs and pelts.

The second half was held the following morning, with free-wheeling discussion on the future of boxed lamb, new marketing technologies and the relative merits of mar-

chandising sheep through auction markets, central markets and direct marketing. Producers took time off from "skull sessions" only to visit commercial exhibits and eat lam-related meals and snacks.

In early remarks, Doane noted sheep producers face competition not only from beef and pork, but also from imports of meat products. In 1970, he said, 4.2 million pounds of lamb were imported, valued at nearly \$1.5 million on the basis of 34 cents a pound. In 1982, 18.6 million pounds were imported, which, at \$1.52 a pound, were valued at more than \$25 million.

Unfortunately, Doane said, it does not appear "we are getting \$1.52 out of our (U.S.-raised) product," although "that's the top end of our product is better than what is being shipped in."

A COMPANION speaker on the current state of the art in sheep production, Tom Claymon, said the wool portion of the sheep industry "is 20 to 30 years behind the times."

Claymon, manager of Mid-States Wool, Hutchinson, Kan., scored the wide variation in the quality of wool that is being marketed. Too many flocks in Nebraska and other Corn Belt or transition states are sheared under conditions inviting contamination.

Another inherent problem, he said, is that

the majority of sheep in Nebraska are "black-faced" breeds, raised predominantly for meat, while "white-faced" breeds in the west are raised primarily for wool.

There isn't a breed of black-faced sheep that will shear as much wool (as a white-faced breed), and black wool fibers prevent wool from being used in the apparel market, he explained.

IN A SITUATION where there's not enough wool produced to meet domestic need — 2 pounds of wool are imported for every pound of American wool — Claymon asked the rhetorical question: Why aren't we getting more for wool?

He urged individual producers and custom shearers to do a better job of caring for the product at the farm level through such basic practices as shearing on a clean area, making sure wool is dry before shearing, tying individual fleeces with paper twine and putting fleeces in an acceptable bag. Garbage bags and feed sacks are bad news, he said.

"If we don't clean up our product, the ratio of imported to domestic wool will increase to 4 to 1," he warned.

Ed Sisson, a grocery store marketing manager from Grand Island, reported on experiences in in-store merchandising of lamb. Aiding in the effort has been Arlen

Gangwish of Shelton, president of the Nebraska Sheep Council.

Sisson said the thrust of advertising is to sell lamb as a desirable product at periods of the year other than Easter. Conceding that "results so far are not tremendous," he pledged to "keep on working" at increased retail sales on lamb cuts.

Sisson termed boxed lamb "a real asset," enabling him to sell an increased number of loins. In-store demonstrations and taste sampling, coupled with advertising, results in increased lamb sales, he confirmed.

A GOAL IS TO induce consumers to purchase cuts other than lamb chops and leg of lamb, in lingering problem is breaking the image ex-servicemen have of eating mutton, he said.

A "catch-22" in merchandising and promotion is that of creating a demand or taste for lamb and then having consumers unable to find it in store meat counters, producers said. There is a "distribution challenge," Sisson said, because of the way meat is distributed through warehouses to retail outlets. Another problem identified was the shortage of federally inspected lamb slaughter plants in Nebraska.

In answer to a question, Sisson said lamb currently is not making money for the retailer, but must be offered to meet com-

petition. Working up lamb is labor-intensive and costly as compared to beef, he noted.

Panelists discussing the total scope of marketing predicted that 75 percent to 90 percent of lamb will "go into the box" in the not too distant future, compared to an estimated 25 percent to 40 percent now.

THE POTENTIAL for selling more lamb through restructuring — flaking and forming less desirable cuts and trimming into uniform, controlled portions — was explored in depth.

Bob Rule, head lamb buyer for Iowa Lamb Corporation, Hawarden, Iowa, said the lamb slaughter business will need "a heckuva comeback" to overcome doldrums extending through the third quarter of 1983. The fourth quarter usually is good financially for packers, he said, but a shortage of lamb is dampening recovery this year.

The panel generally agreed that the sheep industry has excess killing capacity, causing packers to scramble to get enough lambs. Prices being paid are not covering plants' variable expenses and are getting in to fixed expenses, Rule said. It is likely some lamb processors will discontinue operations which would strengthen those that survive, the panel said.

The long-term problem of raising sheep numbers is difficult, it was pointed out,

because more slaughter lambs would have to be held back to increase lamb births. This in turn would cut already short supplies for packers for a year or two.

OTHER OBSERVATIONS during the seminar:

—While central markets are not much of a factor in the lamb industry in terms of share of the total market, USDA still quotes lamb prices based on central market transactions.

—Teleauctions are coming in as central markets' role declines.

Artificial insemination (AI) has its place in the sheep industry, but may not be economical for many producers. The system is not perfected as in beef cattle. AI is not feasible for flock improvement unless superior rams are identified. And according to Keith Inskip, professor of animal science at the University of West Virginia, superior rams as identified in most performance tests may not add enough poundage to progeny to pay.

Aside from AI, Inskip said, synchronization of estrus (heat period) of ewes is important in saving on producers' labor at lambing time.

More research into behavior of rams and ewes in breeding situations is needed, Inskip said.

this and that
wayne county extension agent
don c. spitzer

TGE in swine
Mid-winter is the time for swine producers to keep an eye out for symptoms of TGE, one of the leading types of baby pig scours.

Swine producers who have sows approaching farrowing should be extremely cautious about bringing in new hogs to the farm and should avoid introducing new breeding stock prior to farrowing. A rule among swine men is, do not purchase new hogs for one month before or 15 days after a scheduled farrowing.

There is still much to be learned about the spread of the disease which can completely wipe out all pigs under a week of age within a few days. Quite often outbreaks can be traced directly to the addition of new swine to the premises.

It's also possible that the disease may be spread by birds, wild or tame animals or by humans or vehicles traveling from one pen to another. This means that another good management rule would be to keep neighbors or visitors out of the farrowing house and breeding herd.

TGE is a viral infection of baby pigs, causing severe diarrhea and vomiting. It is very infectious, can spread rapidly and can affect pigs of any age, but the older the animals are the less apt they are to have serious problems with it. The older hogs often show watery discharges 3 or 5 days and then suddenly recover.

A vaccine is available. Consult your local veterinarian for more details on which is the best vaccine to use.

Rabbits, rodents and trees
Watch all types of young trees closely during the winter for signs of rabbit or rodent damage. This includes not only windbreaks but also fruit and yard trees.

Generally, after a tree has gone through a few winters in its permanent location, the bark becomes thick and tough enough that rabbits look for something a little more tender.

Best protection is a barrier around each tree and one can be made by cutting a length of 30 inch high chicken netting long enough to encircle each tree.

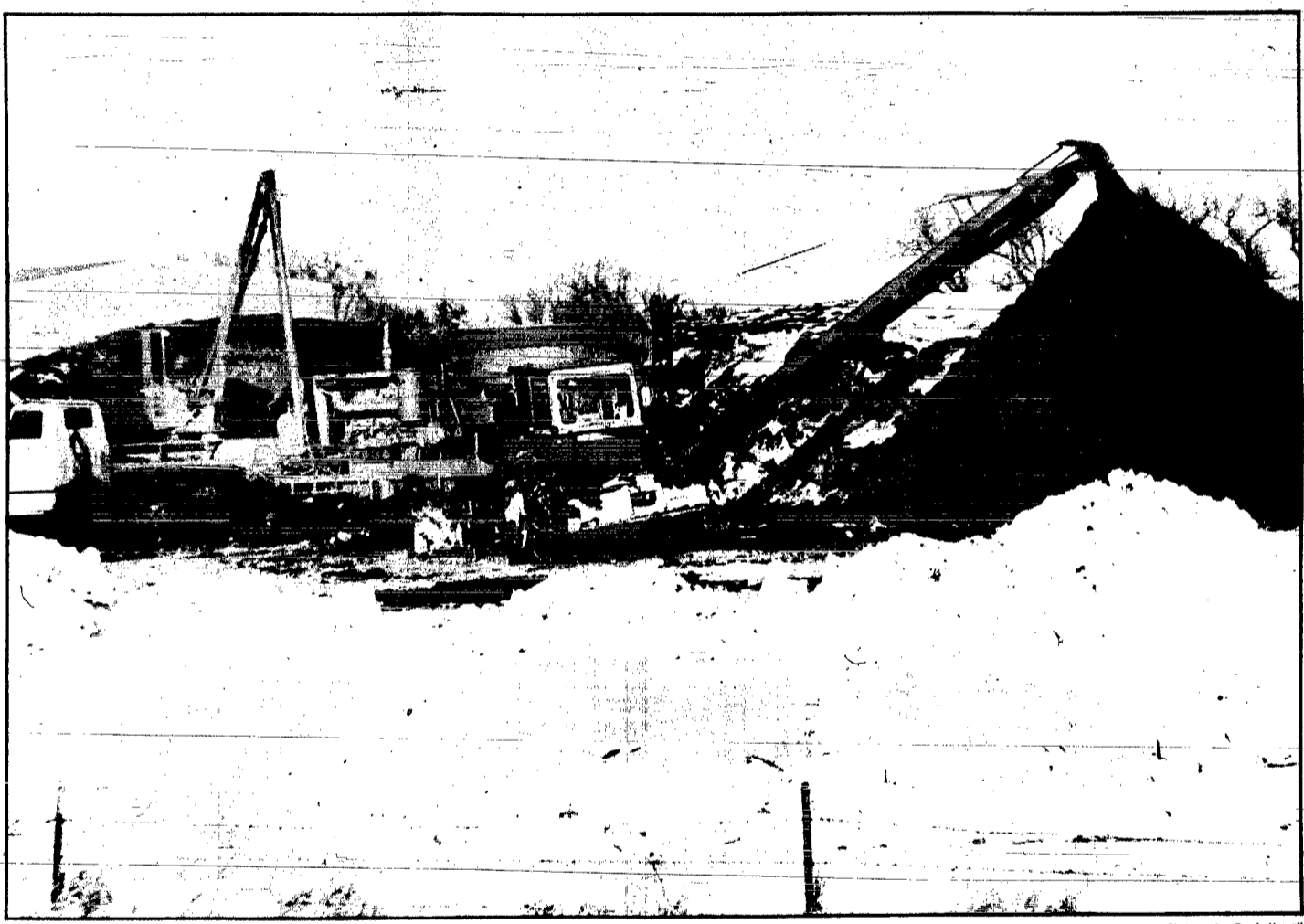
In rare cases it is necessary to use rabbit repellants to protect a windbreak or other large tree planting. Good housekeeping in a tree planting usually works well in getting your trees through the winter without damage. Tall grass or weed growth in a tree planting is always inviting to rabbits as a place to live.

Scrape bark, any dead grass or debris from the base of each tree to discourage mice from nesting next to trees. Mice damage a tree by girdling it at ground level. This type of damage is harder to discover than almost any other until it is too late. When it is spring and the tree doesn't leaf out, you will find out what really happened.

Rabbit repellent formulas
No. 1 — one quart arasan 425 (manufactured by Du Pont, a liquid, and anyone handling Du Pont products should be able to get it for you.)

One pint asphalt emulsion (Usually available at any store laying tile as a part of its business. Emulsion is black and about the consistency of soft putty, but will dissolve in water.)

One gallon warm water.
Use warm water and apply on a warm day (above freezing)



WITH A LONG winter ahead, farmers are busy getting feed supplies lined up for their livestock like on this farm south of Dixon.

4-h news

POPS PARTNERS
Pops Partners 4-H Club, which was organized in 1958, observed its 25th anniversary during a meeting Nov. 26 in the Wakefield School mini gym.

Approximately 50 parents and past and present members and leaders attended the event.

Club member Renee Wenstrand led games and singing, followed by slides of club activities during the first 20 years shown by Mr. and Mrs. Bill Mattes, Wakefield.

Mike Muller, Wakefield, spoke of club highlights during the past five years. Also speaking was Stan Starling, Dixon County agent.

Displayed during the evening were scrapbooks and pictures of the past 25 years.

The cooperative lunch included a decorated cake made by Sondra Mattes and Jan Johnson.

Fertilizer prices probably will climb for farmers sometime next spring

In the spring of 1984, fertilizer prices to farmers likely will be \$10 to \$30 a ton higher than now, according to Dick Wiese, University of Nebraska extension soils specialist.

"Energy is what affects fertilizer prices the most; it's always energy," Wiese said. Energy is associated with the manufacturing of fertilizer, the distribution of fertilizer and even the application of fertilizer on the field, he said.

The problem of high energy costs in fertilizer manufacturing that the United States faces is not shared by some countries, Wiese said. "Many countries that manufacture fertilizer have low energy costs or are heavily government subsidized or even government-owned," he added.

CONSEQUENTLY, THE United States feels the pressure of imports and this, really tempers what and how much is manufactured, Wiese said.

These higher prices, Wiese said, will be associated with phosphate materials, some of the liquid fertilizers and anhydrous ammonia.

Some experts foresee a crisis with a shortage of fertilizer supplies, but Wiese doesn't agree. "Everything seems to be rather normal; however, that doesn't mean something may not happen," he added.

To a large extent, there should be enough fertilizer to handle the crops and acreages and meet all of the needs for the 1984 growing season," Wiese said. However, shortages that might occur would be highly localized because of barge or train traffic.

What a farmer should do in light of the fertilizer expectations is up to the individual, his supplier and the manufacturers' sources, he said.

"I would encourage our farmers to discuss the matter with their local supplier and decide whether they can still put some on this winter or apply it early next spring or just purchase some fertilizer before the end of the year," Wiese said.

Things may vary quite a bit from one local dealer to another, he added.

the farmer's wife by pat melerhenry

When the month of December comes up on the calendar, I send three important birth day cards before I address the Christmas cards.

The first goes to Janet Heller at Wisner. I shared a cabin at a retreat with Jan and her Mother one summer, and made a new friend.

Before I ever knew her, Jan lost a son to leukemia and now devotes a lot of time helping other people deal with loss. I admire her because she's not afraid to "get involved" with people in need.

THE SECOND goes to Marlyce Seaman at Orlando, Florida. Marlyce is the red-headed gal who lived 1/2 mile from me and with whom I went through all 12 years of school. She's married to a pastor and has given me some special insights about that role.

When we went to the Orange Bowl game, we stayed in their home and visited Disney World. Can you imagine living 10 miles from that fairland?

The third card goes to my little brother, now living in Lexington, South Carolina. This guy arrived to disturb my single child status when I was 2 1/2, and he disturbed me many years after that. Without a doubt, he was the original kid in York County.

They took me to the hospital to see him, and when my aunt held him in the nursery window, I looked at the nurse and said, "That's what I want to be." Of course, I looked at the baby, too — he seemed sweet enough then.

My Mother didn't have another child for seven years — she was so busy chasing this one!

FROM THE TIME he was two, he wandered off with the dogs. We never knew where we would find them. We looked first in the tank, but fortunately never found him there.

Once or twice, he was climbing the silo. Several times, he showed up at the country school I attended.

He found every mud hole, and fell in it. One morning, Mom cleaned him up and changed him until she ran out of clean clothes.

Then she took his picture, and let him run. His main joy was teasing his sister. He was really my "thorn in the flesh." I guess the incident I remember most vividly was the day I wore my first bra.

As we got into the car pool for swimming lessons, he announced in a loud voice, "Guess what Patricia has on today!"

OF COURSE, the escapades continued in high school. One day, he was terrorizing the study hall with a water pistol.

The teacher said, "Let me have that; and as Jim says, 'I let him have it, right between the eyes!'"

The one nice thing he did for me was to make me a cedar chest for graduation. He worked on it in shop, and the whole school kept the secret until honors night, when the shop projects were on display. Then he handed me the key — and I cried.

When he was not quite 18, he had an argument with my Dad and went to see the Navy recruiter. His wanderlust was finally satisfied — he "saw the world."

Twenty-one years later, he retired, an officer, and went to work for a nuclear waste disposal company, putting all that expertise from the Navy to work.

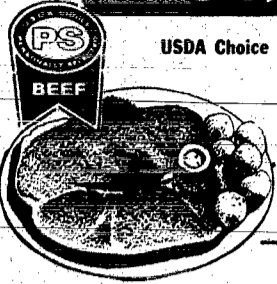
BUT HE STILL enjoys picking on me. For instance, he lives near Clemson U, and frequently reminds me that those Tigers beat the Big Red.

But he has a son who happens to be very creative at causing disruption. For some reason, when he calls, my Mom, to describe Ross' latest escapade, she isn't very sympathetic!

Happy Birthday, Jim. We love you, and are very proud.

PRICES EFFECTIVE THRU DECEMBER 13

Round Steak



USDA Choice
\$1.59
Lb.

Farmland Bacon

Hickory Smoked
Sliced Bacon
\$1.19
1 Lb. Pkg.
Thick Or Regular

IGA
Lunch Meat
89¢
12 Oz. Pkg.

USDA Choice Steak

Sirloin Lb. **\$2.99**
T-Bone Lb. **\$3.39**

Cosco 14-235
FOLDING TABLE \$19.99
Reg. \$22.99 Each

Cosco 14-102
PADDED CHAIR \$11.99
Reg. \$13.99 Ea.

Do Your Christmas Shopping At... **IGA**

Boneless USDA Choice
Family Steak Or Rump Roast Lb. **\$1.89**

USDA Choice Boneless
Beef Briskets Lb. **\$1.69**

Farmland
Link Sausage 12 Oz. Pkg. **79¢**
Hormel 6 Varieties Light 'N Lean
Cooked Ham 4 Oz. Pkg. **\$1.09**

Personally Selected
Pork Chops
Rib Chops Lb. **\$1.29**
Loin Chops Lb. **\$1.39**

IGA All Meat
Franks 1 Lb. Pkg. **\$1.09**

USDA Choice Boneless Sirloin Tip Or
Cube Steak Lb. **\$2.19**

Chicken Fried
Patties Lb. **\$1.19**

Farmland Cry-O-Vac Smoked
Picnics 4 To 8 Lb. Avg. **89¢**

Prairie Maid Chunked
Braunschweiger 3 To 6 Lb. Avg. **59¢**

Swift Lean 'N Tender
Boneless Hams 2 To 3 Lb. Avg. **\$2.29**

U.S. No. 1
Russet Potatoes
10-Lb. Bag
98¢

Ripe Red Tomatoes Lb. **69¢**
Texas Sweet Ruby Red Grapefruit 7 For **\$1**
Washington Extra Fancy Red Or Golden Delicious Apples 8 For **\$1**
Crisp, Fresh Cauliflower Head **\$1.69**
California Sunburst Navel Oranges 5 Lb. Bag **\$1.89**
Fancy Jumbo Walnuts Lb. **89¢**
Polished Pecans Lb. **\$1.49**

Rainbow Paper Products
Single Roll Towels
4 Roll Bath Tissues
120 Ct. Napkins
Your Choice
2 \$1
Pkgs. For

Van Camp's **Pork 'N Beans**
16 Oz. Can
35¢

GE 15-150 3 Way Soft White
Light Bulbs Pack **\$1.59**
Liquid Dishwashing Sunlight Detergent 22 Oz. Btl. **\$1.27**
Concentrated Laundry All Detergent 84 Oz. Box **\$3.29**
Liquid Laundry Wisk Detergent 64 Oz. Btl. **\$3.29**
Save On Wesson Oil 48 Oz. Btl. **\$2.59**
Thank You Apple Pie Filling 21 Oz. Can **59¢**

5 Varieties Capri Sun Drinks 10 Ct. Pack **\$2.39**
Good Value White Corn Syrup 32 Oz. Btl. **99¢**
Stack Up On Pet Milk 13 Oz. Can **55¢**
Many Varieties Gerber Strained Fruit 4 1/2 Oz. Jar **24¢**
Many Varieties Gerber Strained Vegetables 4 1/2 Oz. Jar **24¢**
Sandwich IGA Bread 24 Oz. Loaf **59¢**

Totino's Frozen **Pizza**
CRISP CRUST PARTY PIZZA
10.1 To 11.5 Pkg.
6 Varieties
99¢

blue bunny **Cottage Cheese**
Regular Or Low Fat
24 Oz. Carton
99¢

FROZEN
Frozen Apple, Pumpkin, Or Mince
Mrs. Smith's Pies 26 Oz. Pkg. **\$1.49**
Deep Dish Pet Pie Shells 2-12 Oz. Shells **89¢**
Frozen Crinkle Cut Potatoes 5 Lb. Bag **\$1.99**
Frozen Bread Dough 5 Lb. Each **\$1.39**

DAIRY
7 Varieties
Hi-Life Yogurt 8 Oz. Cartons For **\$1**
1 Lb. Quartered Rainbow Margarine 3 Pkgs. For **\$1**
Pillsbury All-Ready Pie Crust 15 Oz. Pkg. **\$1.39**
Coby Or Mild Cheddar Halfmoon Cheese 10 Oz. Pkg. **\$1.49**
1 Lb. Quartered Fleischmann's Margarine Lb. **89¢**

Tablets Corcidin D 24 Ct. Pkg. **\$1.99**
3 Varieties Marz Dog Chews Each **99¢**
4 Varieties Ecks Bake Pans Each **\$1.09**

Old Spice Lotion After Shave 4 1/2 Oz. Btl. **\$2.79**
3 Varieties Old Spice Deodorant 2 1/2 Oz. Each **\$1.69**

30 Off Dishwasher All 50 Oz. Box **\$2.37**
Cuddler Cheese Or Chd Best Campbell's Soup 11 Oz. Can **49¢**
Dry Roasted Salted Or Unsalted Planter's Peanuts 16 Oz. Each **\$2.59**
Super Crunch! Planter's Cashews 12 Oz. Each **\$4.99**
French's Sauce Worcestershire 10 Oz. Btl. **\$1.19**

French's Seasoning Salt 3 Oz. Each **75¢**
Post Raisin Bran 25 Oz. Box **\$2.19**
Rich 'N Chigs Or Pecan Sandies Keebler Cookies 13 Oz. Pkg. **\$1.39**
Old Name Ginos Italian Bread 16 Oz. Loaf **69¢**
Country Meat Sandwich Bread 24 Oz. Loaf **89¢**

Snuggle Fabric Softener
64 Oz. Bottle
96¢

IGA Salad Dressing
32 Oz. Jar
75¢

Baker's Semi-Sweet Chocolate Flavored Chips
12 Oz. Bag
88¢

32 Oz. Bottle Heinz Ketchup
\$1.59

3 Diamond Oysters
8 Oz. Can
79¢

2 Lb. Maxwell House Or 26 Oz. Master Blend All Grinds **\$3.89**
Chex Cereals Wheat, Rice Or Corn 12 To 15 Oz. Box **\$1.39**

NOW OPEN 24 HOURS A DAY
RON'S HOMETOWN IGA
LOCALLY OWNED AND OPERATED Wayne, NE

winside news

mrs. John gallop 286-4426

PITCH CLUB
Saturday Night Pitch Club met Saturday in the home of Mr. and Mrs. Charles Jackson. A gift exchange was held.
A New Year's Eve no-host supper will be held Saturday, Dec. 31 in the home of Mr. and Mrs. Ted Hoeman.
The next meeting will be held Saturday, Jan. 28 with Mr. and Mrs. Dale Langenberg as hosts.

BLOOD PRESSURE CHECK
The Winside Rescue EMT-A team will be giving free blood pressure checks in the fire hall on Monday, Dec. 12 from 7 to 9 p.m. The public is invited.

GT PINOCCHLE CLUB
The GT Pinocchio Club will be held tomorrow (Friday) with Mrs. Howard Iversen as hostess. It was postponed from Dec. 2 due to icy road conditions.

BRIDGE CLUB
Tuesday Night Bridge Club had been postponed from Nov. 29 to Tuesday, Dec. 13 with Mr. and Mrs. Charles Jackson as hosts.

THREE FOUR BRIDGE
Nine members of the Three Four Bridge Club attended a 12:30 luncheon in the Brass Lantern in Norfolk, Friday. Following the luncheon the members went shopping.
The next meeting will be Friday, Jan. 13 with Mrs. Ben Ben-shoof as hostess.

COTERIE
Mrs. Lloyd Behmer entertained Coterie in her home Thursday, Mrs. N.L. Difman and Mrs. Ruby Sweigard received the prizes.
The next meeting will be Thursday, Jan. 5 with Mrs. Ben Ben-shoof as hostess.

CONTRACT
Mrs. C.O. Will entertained Contract in her home Nov. 30. Mrs. Ruby Sweigard received high. Mrs. Gladys Gaebler, second high and Mrs. Lloyd Behmer and Mrs. Minnie Graef, average.
There will be no December meeting. The next meeting will be Wednesday, Jan. 11 with Mrs. N.L. Difman as hostess.

United Methodist Church (C.A. Carpenter, pastor)
Thursday, Dec. 8: Bible study, 8 p.m.
Sunday, Dec. 11: Sunday school, 10:15 a.m.; worship, 11:30 a.m.
Tuesday, Dec. 13: UMW no-host covered dish Christmas luncheon, social room, 12 noon; Sunday school Christmas program practice, 3:45 p.m. Sunday school teachers meeting, 7:30 p.m.

Wesleyan, Dec. 14: UMYF Christmas party, 7:30 p.m.

Trinity Lutheran Church (Vicar Peter Jark-Swain, supply pastor)
Sunday, Dec. 11: Sunday school, 9:30 a.m.; worship, 10:45 a.m.; acolyte, Kristy Miller; AAL meeting following worship.
Wednesday, Dec. 14: LCW no-host carry-in luncheon, 12:30, social room.

St. Paul's Lutheran Church (John E. Hafermann, pastor)
Thursday, Dec. 8: Bible study, 6:30 a.m.; women's Bible study, 1:30 p.m.; Adult Information Class, 7:30 p.m.
Saturday, Dec. 10: Sunday school Christmas program practice, 9:30 a.m.
Sunday, Dec. 11: Sunday school and Bible classes, 9:15 a.m.; wor-

ship, 10:30 a.m.; acolytes, Loralee Jensen and Ann Meierhenry; Tape Ministry, Winside, Mark Janke, Wayne, Mr. and Mrs. Leo Hansen; Norfolk, Mr. and Mrs. Milton Johnson. 12:30 covered dish Sunday School Association Christmas dinner, entertainment committee Mrs. Gene Jorgensen, Mrs. Bill Brudigan, Mrs. Harlin Brugger and Mrs. John Hafermann; Regional Center, 2 p.m.
Monday, Dec. 12: Women's Bible study, 9:30 a.m.; Elders, 7:30 p.m.
Tuesday, Dec. 13: Evangelism, 7 p.m.
Wednesday, Dec. 14: Mid-week classes and confirmation, 7 p.m.; choir, 7 p.m.; teachers meeting, 8:30 p.m.

SOCIAL CALENDAR
Thursday, Dec. 8: Neighboring Circle Christmas luncheon, 1

p.m., Mrs. Richard Carstens; Center Circle, 1:30 Christmas dinner, Wiff's Cafe; Girl Scouts, fire hall, 4 p.m.
Saturday, Dec. 10: Helping Hands 4-H Club Christmas party, Cindy Berg, 1:30 p.m.; Tri-County Coop annual meeting, auditorium, 7 p.m.
Sunday, Dec. 11: Regional Center, 2 p.m.
Monday, Dec. 12: Free blood pressure check, fire hall, 7-8 p.m.; firemen's meeting; American Legion Auxiliary Christmas covered dish supper, Mrs. Howard Voss home, 6:30 p.m.; Cub Scouts, Mrs. Warren Gallop, 3:45 p.m.; Tiger Cubs, Mrs. Stuart Stuthman, 3:45 p.m.

SCHOOL CALENDAR
Thursday, Dec. 8: Girls basketball, Newcastle, 6:30 p.m., there; wrestling, Pender, 7 p.m., there.
Friday, Dec. 9: Boys basketball, Laurel, 6:30 p.m., there.

Saturday, Dec. 10: Wrestling tournament, North Bend.
Monday, Dec. 12: Board of Education meeting, 7:30 p.m.
Mrs. Beverly MacCallum of Omaha arrived Friday to spend the weekend in the home of Mrs. Helen Hancock and family. She returned home Monday.
Mr. and Mrs. Brad Roberts entertained in their home in honor of the host's birthday on Nov. 30. Those attending were Mr. and Mrs. Dennis Bowers and Brian of Winside, Mr. and Mrs. Ray Roberts and Jim of Carroll, Mr. and Mrs. Paul Roberts of Randolph and Mr. and Mrs. Edwin Brogren of Norfolk.

Jim Jackson of Lincoln spent two weeks in the home of his parents, Mr. and Mrs. Charles

Jackson of Winside, recuperating from knee surgery. He returned home Sunday.
Thursday dinner guests in the home of Mrs. Minnie Weible were Mr. and Mrs. Gene Weible of Omaha, Mrs. Louise Engelson and Cecil Leifing, both of Randolph.
Mrs. Minnie Weible of Winside, Mr. and Mrs. Darrell Graber of Omaha and Mr. and Mrs. Fred Long of Madison were Thanksgiving dinner guests in the home of Mr. and Mrs. Allen Long of Madison.
Mrs. Minnie Weible returned home Thursday after spending a week in Omaha visiting in the homes of her children, Mr. and Mrs. Gene Weible, Mrs. Lori Centretto and Mr. and Mrs. Darrell Graber.

carroll news

mrs. edward fork 585-4827

THANKSGIVING GUESTS
Mr. and Mrs. Tom Kerstine of Lincoln, Mrs. T.P. Roberts of Wayne and Mr. and Mrs. Wayne Kerstine flew to Minneapolis, Thanksgiving day and spent until Nov. 29 in the Mike Olason home. Tom is a pilot.

Mr. and Mrs. Arnie Siefken of Jamestown, N.D., Mr. and Mrs. Mike Gearhart and family of Newman Grove, Jill Kenny of Wayne, Jim, Joe, Bob and Rick Kenny of Carroll were Thanksgiving dinner guests of their parents, Mr. and Mrs. Merlin Kenny.
Mr. and Mrs. Larry Jordan of Hutchinson, Kan. and Mrs. Merian Jordan of Wayne were Nov. 25 dinner guests in the Merlin Kenny home.

Mr. and Mrs. Danny Moss and family of Colorado Springs, Mr. and Mrs. John Collins and family, and Mr. and Mrs. Mike Cadwell and family, all of Sioux City, and Mr. and Mrs. Kevin Johnson, Stanley and Mary Ann of Carroll

were Thanksgiving dinner guests in the home of their parents, Mr. and Mrs. Kenneth Johnson of Carroll.
Guests in the Russell Gall home for Thanksgiving included Ms. Joyce Froendt and Brett of Coleridge, Bruce and Brenda Froendt, both of Lincoln, Mr. and Mrs. Larry Warburton and family of Sioux City, Mr. and Mrs. Sam Schram and family of South Sioux City, Mr. and Mrs. Jerry Walsh and family of Hubbard, Mr. and Mrs. Bob Hall, Trevor and Kristi and Mr. and Mrs. Kenneth Hall, Mandi and Brandon, all of Carroll and Mrs. Anna Hansen of Randolph.

The town and Country Home Extension Club had a Christmas supper with husbands as guests on Saturday at the Joe Claybaugh home.
Cards furnished entertainment with prizes going to Mrs. Melvin Dowling, Larry Wittler, Dean Owens and Willis Lage.

The next meeting will be Jan. 7 at the Dean Owens home when a craft lesson will be the feature.

ADULT FELLOWSHIP
The Adult Fellowship met Sunday for a chili supper held at the home of Mrs. Etta Fisher.
Hosts were Mr. and Mrs. Erwin Morris, Cora and Merlin Jenkins. Members brought cookies for a closing lunch.
The group sang Christmas carols.
Officers who were re-elected for the new year are Merlin Jenkins, president; Keith Owens, vice president; Mrs. Milton Owens, secretary; and Mrs. Etta Fisher, treasurer.
The next meeting will be Feb. 5.

CRAFT CLUB
The Carroll Craft Club members and their husbands had a Christmas supper Friday at the Wagon Wheel in Laurel and then went to the Belden Bank parlors where they played cards.
Prizes were won by John Williams, Mrs. Dennis Rohde, Larry Alderson and Mrs. Lonnie Fork.

Mrs. Dennis Rohde will host the club on Jan. 19.
DEDICATION SERVICE
A special dedication service was held at St. Paul's Lutheran Church during worship service on Sunday for hymn book holders that were given by Mrs. Anna Hansen and family in memory of Arnold Hansen.
Pastor Mark Miller was in charge.
LIBRARY OPEN HOUSE
Open house at the Carroll library will be held on Saturday, Dec. 17 from 2 to 4 p.m. at the library.
The AAL Branch 3019 members voted to change the time from Tuesday, Dec. 13 to Saturday, Dec. 17.
The Aid Association for Lutherans weatherized and redecorated the library with a \$2,500 grant received from the home office in Appleton, Wis.
St. Paul's Lutheran Church (Mark Miller, pastor)
Saturday, Dec. 10: Christmas program practice, 1:30 p.m.
Sunday, Dec. 11: Sunday

school, 10:30 a.m.; worship service, 11:30 a.m.
United Methodist Church (Keith Johnson, pastor)
Saturday, Dec. 10: Christmas program practice, 1 p.m.
Sunday, Dec. 11: Sunday school, 10 a.m.; worship service, 11 a.m.
Presbyterian-Congregational Church (Gail Axen, pastor)
Sunday, Dec. 11: Combined services at the Congregational Church; Bible study, 9:30 a.m.; worship service, 10:30 a.m.

SOCIAL CALENDAR
Thursday, Dec. 8: Carroll Womens Club, Lutheran Church fellowship hall; EOT Social Club, Mrs. Roy Gramlich.
Friday, Dec. 9: GST Christmas supper, Wayne Kerstine home, 6:30 p.m.
Saturday, Dec. 10: Social Neighbors Christmas supper, husbands as guests, Duane Creamer home.
Monday, Dec. 12: Senior Citizens, fire hall, Carroll school Christmas musical, auditorium, 7:30 p.m., public is invited; Star

Extension Club supper, Ron's Steak House.
Tuesday, Dec. 13: Hilltop Larks Christmas supper, Ron's; Carroll Business Club supper, Ron's.
Wednesday, Dec. 14: Congregational Womens Fellowship, St. Paul's Lutheran Ladies Aid, 12:30 p.m. luncheon; United Methodist Women.
Mr. and Mrs. Jeff Schaffer and Lori moved on Nov. 18 from the Countryside Apartments in Carroll to the trailer home that they purchased in Carroll.

SNAPPER
SNOWTHROWER SPECTACULAR.

Get a 110 volt electric starter for **HALF PRICE** with purchase* of a Snapper single-stage snowthrower.

This powerful single-stage snowthrower with its 3 HP 2 cycle engine and 20 clearing width has a lot going for it. Like a chute that rotates a full 220° and a deflector cap that directs snow where you want it. And steel auger blades that slash through the stubbornest snow. And right now when you buy our single-stage snowthrower, your SNAPPER dealer will throw in a 110 volt electric starter for HALF PRICE. So take advantage of this SNAPPER Snowthrower Spectacular today.

It's a snap with **SNAPPER**.

110 VOLT ELECTRIC STARTER
Retail Value \$69.95

*At regular retail price.
Electric Starter kit subject to availability.

HURRY! OFFER ENDS SOON
AT PARTICIPATING DEALERS

"IT'S A SNAP" TO OWN A SNAPPER TODAY WITH OUR REVOLVING CREDIT PLAN

KOPLIN AUTO SUPPLY
213 W. First St. Wayne, Mo 402-373-2234

Valley National Dealer Days
DEC 8, 9, 10

Free IBM PCjr
With every Valley pivot purchased or leased December 8, 9, 10

Here's the chance of a lifetime to get the new IBM PCjr computer absolutely free. Purchase a new Valley center pivot, corner system or linear on the 8th, 9th or 10th and receive a gift certificate for a free IBM PCjr redeemable at your participating Valley dealer.

The IBM PCjr includes computer unit and keyboard with 64K memory plus valuable software. Delivery when available in 1984.

Gift limited to participating Valley dealers.

Valley National Dealer Days begins on December 8 and closes 5:00 p.m. PST on December 10, 1983.

PRIZES
Just register to win.

An IBM Personal Computer XT or
 An IBM Personal Computer

IBM Personal Computer XT includes keyboard, monitor and hard disk drive.
IBM Personal Computer includes keyboard, monitor and standard drive.

Gift limited to participating Valley dealers. You must be at least 18 years old to enter.

You don't have to be present to win and no purchase is necessary.

If you're planning on a new pivot for 1984, this is a real chance to have the top of the line—Valley, plus a new IBM PCjr.

Take advantage of the ITC this year and be ready to go in '84 with a tough reliable Valley—the world's largest selling center pivot for more than 30 years. Also, choose from a variety of custom-tailored finance plans.

C'mon in and let's talk it over. Refreshments will be served.

VALLEY

Husker Valley Irrigation
Phone 371-0153 RR 2 Norfolk, NE 68701
In Wayne Area Contact: Mick Samuelson — 287-2040

concord news

mrs. art johnson 584-2495

LUTHERAN CHURCHWOMEN
The Concordia Lutheran Churchwomen held its annual Advent luncheon at the church on Thursday evening at 6:30 p.m. with a special serving committee.
Anna Circle had the program and decorated the tables. Program theme was "How Far to Bethlehem?" with Mrs. Bud Hanson as leader, opening with "Is This the Road?" Mrs. Arvid Peterson gave the invocation, Mrs. Arthur Johnson read the scripture from Luke 2:8-15 and Matthew 2:1-11. Mrs. Norman Lubberstedt read the first meditation: how shall we plan for the journey? Mrs. Hanson sang "O Lord Let Me see the Star." Mrs. Kenneth Olson read the second meditation: what preparation shall we make?
Mrs. Esther Peterson read the third meditation: the final check — are you ready for Bethlehem? Hymns were sung by all after

each meditation. Mrs. Hanson closed with prayer.
Installation was held by Mrs. Evert Johnson, president, of 1984 officers.
New circles had been arranged and each circle met and selected their leaders as follows: Elizabeth Circle: Mrs. Marlen Johnson, leader; Mrs. Virgil Pearson, recorder; Mrs. Ernest Swanson, Bible study leader; Mrs. Clarence Pearson, Jan. 5 hostess. Phoebe Circle: Mrs. Wallace Anderson, leader; Mrs. Quinten Erwin, recorder; Tekla Johnson, Bible study; Mrs. Norman Anderson, Jan. 5 hostess. Anna Circle: Mrs. Glen Magnuson, leader; Mrs. Vern Carlson, recorder; Mrs. Kenneth Olson, Bible study; Mrs. Glen Magnuson, January hostess. Dorcas Circle: Mrs. Lee Johnson, leader; Mrs. Gary Rastede, recorder; Mrs. Evert Johnson, Bible study; Mrs. Ted Johnson, January hostess.

BAKE AND CRAFT SALE
The Concord-Dixon Senior Citizens held a bake and craft sale at the Senior Center in Concord on Saturday. Pie and coffee was also served with a good attendance.
GOVERNMENT DISTRIBUTION
A distribution of government surplus cheese, butter and dry milk will be held Dec. 9 at 10:30 to 12 a.m. at the Concord-Dixon Senior Citizens Center in Concord.
SENIOR CITIZENS
The December pollock dinner and sermonette, business meeting of the Concord-Dixon Senior Citizens will be held Dec. 14 at 12 noon at the Concord Senior Center. Dessert will be furnished in honor of Roy Johnson's Dec. 16 birthday.

There will also be a blood pressure clinic by Penny Johnson following the dinner.
MERRY HOMEMAKERS
The Merry Homemakers Extension Club met the evening of Nov. 29 with Mrs. Ervin Haisch as hostess with 12 members attending. Mrs. Evert Johnson led some games and other articles were read. Plans for the Christmas program were made and will be held Dec. 12 with a 6:30 p.m. supper at the home of Mrs. Iner Peterson.
LADIES AID
St. Paul's Lutheran Ladies Aid met Thursday afternoon at 2 p.m. at the church. Pastor Kramer gave devotions and led the lesson.
A gift was given to Sharon Poillot, a missionary in Liberia.
Plans were made for the Christmas dinner on Dec. 22 at 12 noon at the church.

All ladies of the congregation are invited to dinner.
Mrs. Ervin Kraemer served refreshments.
ARTEMIS CLUB
The November Artemis Club was cancelled. The December meeting will be a Christmas supper with husbands invited on Dec. 19 at the Larry Lubberstedt home.
Concordia Lutheran Church
(David Newman, pastor)
Saturday, Dec. 10: Sunday school Christmas program practice, 9:30 a.m.
Sunday, Dec. 11: Sunday school and Bible classes, 9:30 a.m.; morning worship service, 10:45 a.m.; Churchmen's Sunday; Couples League Christmas supper, 6:30 p.m.
Tuesday, Dec. 13: Bible study, 9:30 a.m.

Wednesday, Dec. 14: Choir practice, 8 p.m.
St. Paul's Lutheran Church
(Steven Kramer, pastor)
Sunday, Dec. 11: Morning worship service, 8:30 a.m.; Sunday school, 9:30 a.m.
Evangelical Free Church
(John Westerholm, pastor)
Saturday, Dec. 10: Sunday school Christmas program practice, 9:30 a.m.
Sunday, Dec. 11: Sunday Bible school, 9:59 a.m.; morning worship service, 11 a.m.; evening service, 11 a.m.
Wednesday, Dec. 14: Ladies Bible study, 9:30 a.m.; family Bible study and prayer services, 8 p.m.
Marlyce Rice of Concord held a merchandise Christmas open house and reduction sale in honor

of her 10 years in the business. It was held at the Concord Beauty Shop on Friday and Saturday.
Mrs. Larry Lubberstedt won the door prize on Saturday.
The Norman Andersons joined other relatives in the Jerry Stanley home Saturday evening in honor of their grandson's birthday. Jeff Stanley, son of the Jerry Stanley's, was 2 years old.
Mrs. David Johnson of Pineriver, Minn., visited in the Arthur Johnson home on the afternoon of Nov. 30. She also visited with Mrs. Art Johnson at the Concord Senior Center.
The John Puhrmans, Jonathon and Carl of Sioux City and the Melvin Puhrmans were Sunday dinner guests in the Dwight Johnson home.
The Andrew Manns had dinner

Saturday evening with their family at Becker's Restaurant in Norfolk in honor of Andrew Mann's birthday.
The Hubert McClarys and Fred Manns were Sunday supper guests in the Andrew Mann home in honor of the twins, Andrew and Fred Mann's Dec. 3 birthdays.
Shelli Taylor of Lincoln spent the weekend in the Robert Taylor home.
The Chuck Nelsons entertained Sunday afternoon in their home in honor of Erich's 4th birthday. Guests were Shelli Taylor of Lincoln, Mrs. Robert Taylor, the Harvey Taylors, the Earl Nelsons and Robert, the John Taylors, Kristi and Scott.
Mr. and Mrs. Harvey Taylor spent Saturday in Omaha with their daughter, Kathy Keifer.

belden news

mrs. ted leapley 985-2393

COMMERCIAL CLUB
The Belden Commercial Club met Monday morning for a brunch at Heese Cafe.
Plans were made to hold an open house coffee honoring Marie Bring at the fire hall on Tuesday, Dec. 13 from 10 a.m. to noon.
Santa Claus will visit Belden on Saturday, Dec. 17 at 3:30 p.m. Bingo will be played at 2 p.m. in the fire hall.
Election of officers was held. New Commercial Club officers are Laurence Fuchs, president; Lois Hintz, vice president; and Loretta Cook, secretary treasurer.
REBEKAH LODGE
Rebekah Lodge met Friday evening in the Nellie Jacobson home with 10 members attending.
A Christmas party was held following the business meeting. Card bingo was played and a covered dish lunch was served.
Guests were Mr. and Mrs. Earl Fish.

U & I BRIDGE
Mrs. Louise Anderson entertained at U & I Bridge Club Friday afternoon. Guests were Mrs. R. K. Draper and Mrs. Clarence Stapelman.
Prizes went to Mrs. Doug Preston, high. Mrs. Dave Hay, second high, and Mrs. Frank Kille, low.
BIRTHDAY COFFEE
Coffee guests Saturday morning in the Gary Kavanaugh home in honor of the hostess' birthday were Mrs. Dennis Christensen and family, Mrs. Carl Christensen, Mrs. Mark Christensen, Mrs. Carson Graveholt, Mrs. Gay Oteman and Danelle; Mrs. John Maxon of Laurel, Mrs. Merle Kavanaugh, Mrs. Gary Stapelman and family, and Mrs. Ronald Stapelman and family.
12th BIRTHDAY
Sunday dinner guests in the Lester Meier home for Vickie's 12th birthday were Mr. and Mrs. Steve Meier and Carmen of

Wisner. Mr. and Mrs. Bob Hamilton, Misty and Brian of Randolph, and Mr. and Mrs. Louie Meier.
BIRTHDAY DINNER
Enjoying Sunday dinner at The Hotel in Wakefield to honor the birthdays of Mrs. Louie Abis and Herb Abis, were Mr. and Mrs. John Abis and Megan of Laurel, the Steve Greve family, the Henry Groves and Mrs. Evelyn Greve, all of Wakefield, the Dave Abis family, Mr. and Mrs. Louie Abis, Karen and Rick of Dixon, Pete Seyl of Randolph and Mr. and Mrs. Herb Abis.
Presbyterian Church (Thomas Robson, pastor)
Sunday, Dec. 11, Worship 9:30 a.m.; church school, 10:30 a.m.
Catholic Church (Daniel Hucck, pastor)
Sunday, Dec. 11, Mass, 10:30 a.m.
The Roger Wobbenhorst's returned home Nov. 29 after spending the past week in the Ted

Stephens home, Steamboat Springs, Colo.
Mrs. Floyd Root returned home Saturday after spending 2 weeks in the George Brockley and Virginia Krause homes in Lincoln.
The Robert Grafs, East Long Meadows, Mass., left Friday for their home after spending the past 2 weeks in the Maud Graf home. Kermit Graf accompanied them to Omaha.
Mrs. Mildred Phillips, Creighton, returned home Monday after visiting in the Maud Graf home.
Mr. and Mrs. Jack Blatz, Granada, Calif., left for their home Nov. 30 after visiting in the Delbert Krueger home.
The Quinton Younglungs, Estes Park, Colo., and Mrs. Nellie Hobson, Englewood, Colo., left Nov. 29 for home after visiting 10 days in the Brent Stapelman home.

Area well-represented

Who's Who selections are made

Northwest Nebraska is well-represented by students from this area who have been included in the 17th annual edition of Who's Who Among American High School Students, 1982-83.

Who's Who, published by Educational Communications, Inc., Lake Forest, Ill., is the largest high school recognition publication in the country. Students are selected by high school principals and guidance counselors, national youth groups, churches or by the publishing company based upon students' performance in scholarship award contest or extracurricular activities.

Final selection is determined on the basis of criteria which include high achievement in academics and leadership in school activities, athletics or community service. Traditionally, 99 percent of Who's Who students have a grade point average of "B" or better and 97 percent are college bound.

The 17th edition of Who's Who published in nine regional volumes, features 375,000 students:

Area students selected for this year's volumes are:
Allen — Mike Hoffman, Kelly Kraemer, Karma Rahn, Jeanne Warner, Keith Karlberg, Michelle Petli, Derwin Roberts, Michelle Williams.
Concord — Craig Hanson, Monica Hanson, Sheila Koch.
Dixon — Pamela Kavanaugh, Mark Penlerick, Debbie White.
Laurel — Jim Casey, John Chace, Jana Cunningham, Cara Dahlquist, Michael Dietrich, Barbara Dowling, Renee Gadeken, Ben Galvin, Jeri Hopkins, Teresa Johnson, Michael G. Jones, Brennan

Waterbury — Patty Gentrup, Kirk Hansen.
Wayne — Lisa Baker, Perry Benscholt, Aaron Butler, Cindy Denton, Dawn Droscher, Jon Jacobmeier, Layne Lueders, Paula McCright, Sharon McLain, Becky Miller, Christy Neilsen, Julie Otte, Rodney Porfer, Steve Rethwisch, Pam Ruwe, Michelle Sherlock, Missy Stollenberg, Trisha Willers.

da Jussel, Tim Lineberry, Paul Laquist, Jean Lute, Carol Osborne, Carla Stage, Patsy Thompson, Dawn Wessladt.
Wakefield — Dilynne Byers, Kelly Greve, Troy D. Greve, Carl Johnson, Shelley Krusemark, Kiele Lund, Jean Lunz, Michele Meyer, Mike Muller, Dettie Poppe, Karen Sandahl, Karla Stelling, Renee L. Wensstrand.

K-92 Wants You To Be A Winner
Contact any K-92 staff member by calling 375-2200 ext. 421 to register for 12-12 credit hours of tuition at Wayne State College
Drawing will be December 17 at 10 a.m.
Winners will be drawn by Wayne State College President Dr. Ed Elliott

<p>BILL'S Owned & operated independently by Lueders, Inc.</p> <p>STORE HOURS: 8 a.m.-9 p.m. Monday thru Saturday 8 a.m.-6 p.m. Sunday Stop in Thursdays at 8:00 p.m. for the Bonus Bucks Drawing.</p>	<p>Member of U.S. AFFILIATED Foods Cooperative, Inc.</p> <p>Prices effective Wednesday, December 7 thru Tuesday, December 13</p>	<p>Shurfine Frozen WHIPPED TOPPING 8-Oz. Tub 49¢</p> <p>Gillatte Lite n'Rite ICE MILK All Flavors 1/2-Gallon 99¢</p>	<p>GROUND BEEF</p> <p>100% Pure 75% Lean</p> <p>89¢ Lb.</p> <p>NO RETAILERS PLEASE</p>	<p></p>
<p>Shurfine Buttertop White & Wheat BREAD Large 1 1/2-Lb. Loaf 69¢</p> <p>Old Home RAISIN BREAD 1 Pkg. \$1.09</p>	<p>PRODUCE</p> <p>Shurfresh HALF & HALF Pint 39¢</p>	<p>New Texas Ruby Red GRAPEFRUIT 8 Ct. Bag for \$1.09</p> <p>Washington Red Delicious APPLES 3-Lb. Bag 99¢</p>	<p>7-BONE ROAST 7-12# USDA Choice Lb. \$1.29</p> <p>Wimmers All Meat 15-Oz. Ring RING BOLOGNA Lb. \$2.09</p> <p>Wimmers Best NC WIENERS Lb. \$2.19</p> <p>2 1/2-Lb. Bag \$5.29</p>	<p>GROUND CHUCK Lb. \$1.49</p> <p>Whole Grade A CHICKENS Lb. 63¢</p> <p>Family Pack FRYERS Lb. 61¢</p> <p>John Morrell All Meat HOT DOGS 12-Oz. Pkg. 79¢</p>
<p>Shurfresh MILK</p> <p>VITAMIN D MILK Gallon \$1.90</p> <p>2% MILK Gallon \$1.80</p> <p>1% MILK Gallon \$1.49</p>	<p>LETUCE Large Head 49¢</p> <p>MIX OR MATCH Del Monte Whole Kernel or Cream Style CORN or SWEET PEAS 17-Oz. Can 2/89¢</p>	<p>FRUIT BASKETS All Sizes Available For Your Holiday Gift Giving</p> <p>Robin Hood FLOUR 25-Lb. Bag \$3.69</p>	<p>Farmland SMOKED SAUSAGE Lb. \$1.69</p> <p>Wimmers POLISH SAUSAGE Lb. \$2.19</p> <p>Gorton FISH STICKS 15-Oz. Pkg. \$1.79</p> <p>Shurfresh 12-Oz. Stick SUMMER SAUSAGE \$1.39</p>	<p>John Morrell All Meat FRANKS Lb. Pkg. \$1.29</p> <p>Maple River BACON Lb. Pkg. \$1.09</p> <p>Sliced Beef LIVER Lb. 75¢</p>
<p>HERE'S A GREAT BUY</p> <p>Blue Bonnet Soft MARGARINE 3-Lb. Tub \$1.00</p> <p>NO RAIN CHECKS GIVEN ON THIS ITEM</p>	<p>PEPSI COLA Regular or Diet 6-Pack 12-Oz. Cans \$1.39</p> <p>Baker's Flavored CHOCOLATE CHIPS 12-Oz. Pkg. 89¢</p>	<p>10-Lb. Bag \$1.89</p> <p>5-Lb. Bag 99¢</p> <p>MEISTER BRAU 6-Pack 12-Oz. Cans \$1.49</p>	<p>Lean Boneless STEW BEEF Lb. \$1.69</p> <p>Shurfresh Sliced 12-Oz. Pkg. LUNCHEON MEATS 99¢</p> <p>Farmland — Thick or Thin Sliced BACON Lb. Pkg. \$1.39</p> <p>Taste O'Sea PERCH FILLET Lb. Pkg. \$1.59</p>	<p>DELI</p> <p>BANANA NUT BREAD Loaf 89¢</p> <p>Wimmers NEW ENGLAND Lb. \$2.59</p> <p>John Morrell LARGE BOLOGNA Lb. \$1.09</p> <p>John Morrell BRAUNSCHWEIGER 79¢ Lb.</p>
<p>CHRISTMAS DRAWING Holiday Magic in Wayne Register every time you come in our store to win one of the following prizes:</p> <ul style="list-style-type: none"> • 7-Up Dirt Bike • 4 Black & White TV's <p>* Here's how our Free Gift Certificate Program works!</p> <p>Each time you shop our STORE you'll be given a Free Gift Certificate with every \$1.00 purchase. One free certificate with a \$3.00 to \$9.99 purchase, two certificates with a \$10.00 to \$14.99 purchase, etc. You'll also be given handy Gift Certificate Sever Cards on which to collect these certificates. When you've collected one filled Sever Card turn it in at our store and redeem your FREE 5 P.C. Hostess Set in the pattern of your choice.</p> <p>It's as easy as 1, 2, 3:</p> <ul style="list-style-type: none"> 1 — SAVE — Your Free Gift Certificate 2 — COLLECT — them on your Sever Card 3 — REDEEM — when you have one filled Sever Card, turn it in for your FREE Hostess Set! <p>One filled Sever Card represents \$200 in grocery purchases. Collect another 25 or 50 for more with your filled Sever Card.</p> <p>Certificate valid thru Feb. 7, 1984</p>				

card of thanks

WE EXTEND OUR sincere thanks for the cards and notes of sympathy, memorials and prayers on behalf of Alma Niemann our Mother and Grandmother. Thanks to Pastor Monson and Sister Gertrude for their comforting visits. Special thanks to everyone for remembering our mother's and grandmother's 90th birthday. The families of Frederik, Edward Jr., and Herbert Niemann **dB**

THE FAMILY OF Katie Hokamp would like to express our sincere thanks and appreciation to all relatives, friends and neighbors for the kind expressions of sympathy, love and concern extended to us in the passing of our beloved Mother, Grandmother and Great Grandmother. A special thanks to Pastor Ammon for the meaningful and comforting service. To the Colonial Manor for their good care, to the Randolph Rescue Squad, to the Lutheran Hospital and staff and Dr. Hehner. Also, to the Mary Circle for the lunch, flowers, food, cards and memorials — also to the organist and Lutheran Men's Quartet. God bless you all. Mr. & Mrs. Vernon (Steno) Hokamp and family, Mr. & Mrs. Jack Blotz and family, Alfred Bierchenk and family, Mr. & Mrs. Delbert Krueger **dB**

I WOULD LIKE to thank Carhart's for the CarVac I won in their Christmas drawing. Clara Echtenkamp **dB**

I WOULD LIKE to thank my relatives and friends for the cards, visits, flowers and phone calls made to me during my lengthy stay in St. Luke's Medical Center. A special thank you to Rev. Monson for his visits and prayers. Your acts of thoughtfulness will be remembered always. Raymond M. Nelson **dB**

WE WANT to thank all friends and relatives for cards of sympathy; memorials, flowers, food and any other acts of kindness extended to us at the time of the death of our mother, Grace Ankeny. Rev. and Mrs. Dale Westadt, Mr. & Mrs. Ronald Ankeny, Mr. & Mrs. Louis Abts **dB**

THE MEN AND WOMEN of the Tau Kappa Epsilon and Kappa Delta Gamma would like to thank all the businesses who donated to the TKE Kappa Christmas party **dB**

help wanted

Head Staff is now taking applications for a Secretary/Personnel Development Coordinator at the Watihill office. Must be knowledgeable of the area and it's resources, able to work with Head Staff families; have office experience including good clerical skills. Some out of the area travel, 40 hours per week. Salary - \$2.22 per hour, 26 weeks per year. If qualified send resume to Pearl Harada, Box 10, Watihill, NE 68067. For more information call 846-3493. Closing date: December 14, 1983. Equal Opportunity Employer **dB**

PROCESS MAIL AT HOME! \$75 per hundred! No experience. Part or full time. Start immediately. Details send self-addressed stamped envelope to C.R.I., 2578, P.O. Box 3149, Stuart, FL 33495. **n1714 dB**

miscellaneous

LOOKING FOR A GIFT for a toddler who is a fan of Sesame Street? I make Bert, Ernie, Oscar, Grover, Cookie Monster and Big Bird characters. They are about 15 inches tall, except for Big Bird who is about 3 feet tall. Call Barb Hascall at 375-3142. **dB**

WILL DO BABYSITTING in my home, Monday-Friday. Call Ellen Longe, 375-2285 **dB**

automobiles

DON'T EVER BUY a new or used car or truck until you check with Annie's Ford Mercury, Wayne, 375-1212. We can save YOU money. **n1211 dB**

for rent

FOR RENT: One bedroom, partially furnished apartment. Lease and deposit required. Responsible women preferred. Call 375-4915 after 5 p.m. **dB**

FOR RENT: One bedroom apartment in Les' Steakhouse building. Available immediately. 375-2252 **dB**

INCOME TAX PLANNING, NORM MABEN, Enrolled to Practice, 305 Main, Wayne, Phone 375-1110. **n1013 dB**

for sale

FOR SALE
New, 1983 Case 2090 long wheel base cab, air, heat, stereo/tape, power shift, ether, 2 sets rear weights, front bracket and fix weights, mirrors, Good Year Diana torque 8-ply rear tires, engine heater, water filter, step extension and turn kit. \$31,500.00. Call noon hour or evenings, 402/371-4065, Cliff Warden.

ALL STEEL COMMERCIAL and Agri-Buildings sell cheap with quick delivery and cheap freight for cash deal. Call Loren at 371-5411 or Gary at 371-0548. —n31f

FIREWOOD FOR SALE: Hardwood \$90 per cord split and delivered, second cord \$80. Softwood \$75 per cord. Pick-up load \$60. Town & Country Repair, Pierce, NE 329-4752. **d513**

FOR SALE: Diamond engagement ring and promise ring. Can be made into wedding set. 375-4377 **dB**

PIANO

Beautiful, small used piano to be sold for contract balance in Wayne for monthly payments. Write to G.A.M.C., Box 248, Willmar, MN. (612) 235-5106.
Must transfer by Dec. 30.

real estate

FOR SALE by OWNER
Two bedroom home, recently remodeled at the selling price of \$24,500. It makes an excellent starter home or investment property.
8 5/8 % Financing Available
Call After 5 p.m. or on weekends **375-4967**

FOR SALE: House at 208 West 6th, Leslie Ellis home. Contact: State National Bank Trust Dept. for details, 375-1130. **s15ff**

legal notices

CARROLL VILLAGE BOARD PROCEEDINGS
Carroll, Nebraska
November 8, 1983
The Board of Trustees for the Village of Carroll, Nebraska met on the above date with the following members present: Ed Simpson, Arnold Junck, Bob Hall and Gary Broden. Absent: L. Cunningham. Meeting conducted by A. Junck.
Minutes of the previous meeting were read and approved. The Clerk presented the following bills for payment:
Leo Stephens 10.38
Leo Stephens 225.00
Alice Rohde 180.00
Consolidated Engineers Architects 133.34
Wayne Skelgas, Inc. 484.25
Wayne Herald 19.84
Wayne County Public Power Dist. 225.50
Social Security Bureau 57.49
H. McClain Oil Co. 59.16
Wayne School Dist #17 (Liquor License) 500.00
Lystad's 37.72
Cunningham Well 247.96
Gregoria Morris, Co. Clerk 2,583.00
A motion to pay all bills as presented was made by Braden and seconded by Simpson. A roll call vote was taken with all present voting yes.
OLD BUSINESS: Treasurer's report was made to the Board by the Clerk.
Snow removal priorities were discussed. Also discussed was where to put the snow when clearing the streets.
NEW BUSINESS: Permission was requested and granted to the school to use the auditorium for the Christmas Program on December 12, 1983.
There being no further business for discussion, a motion to adjourn was made by Hall and seconded by Simpson. A roll call vote

was taken with all members present voting yes. The next regular meeting of the Board will be on Dec. 6, 1983 beginning at 7:30 p.m. at the Carroll Library.
Arnold Junck, Chairman
Alice C. Rohde, Clerk
I, the undersigned, Clerk for the Village of Carroll, Nebraska hereby certify that all of the subjects included in the foregoing proceedings were contained in the agenda for the meeting; kept continually current and available for public inspection at the office of the Village Clerk; that such subjects were contained in said agenda for at least twenty-four hours prior to said meeting; that said minutes were in written form and available for public inspection within ten working days and prior to the next convened meeting of said body.
Alice C. Rohde, Clerk
(SEAL)
(Publ. Dec. 8)

NOTICE
Estate of Glen Wade, a/k/a Glenn Wade, Deceased.
Notice is hereby given that on December 5, 1983, in the County Court of Wayne County, Nebraska, the Registrar issued a written statement of Informal Probate of the Will of said Deceased and that Mae Wade, whose address is Rural Route 1, Wayne, Nebraska 68787, has been appointed Personal Representative of this estate. Creditors of this estate must file their claims with this Court on or before February 9, 1984, or be forever barred.
(s) Luverna Hilltop
Clerk of the County Court
Otis, Swartz and Ensz
Attorney for Applicant
(Publ. Dec. 8, 15, 22)
6c1pts

NOTICE OF MEETING
The Wayne Carroll Board of Education will meet in regular session at 3:00 p.m. on Tuesday, December 13, 1983, at the high school, located at 411 West 7th, Wayne, Nebraska. An agenda of said meeting, kept continually current, may be inspected at the office of the superintendent of schools.
Doris Daniels, Secretary
Board of Education
(Publ. Dec. 8)

NOTICE OF INTENT TO LIQUIDATE AND DISSOLVE ID APARTMENTS, INC.
Notice is hereby given in accordance with Nebraska Statute 21-20,123 that a statement of intent to dissolve ID Apartments, Inc., was filed with the Secretary of State of the State of Nebraska on December 5, 1983. The terms and conditions of said dissolution are all shares of the corporation shall be cancelled, all assets and liabilities of the corporation shall be assumed by its shareholders, the liquidation of the corporation shall be completed within the month of December, 1983, and the plan of liquidation is a one month liquidation pursuant to Section 333 of the Internal Revenue Code of the United States.
ID APARTMENTS, INC.
By Irene Blatterf, President
(Publ. Dec. 8, 15, 22)

CLASSIFIED ADVERTISING
Regular Rates
Standard Ads — 20¢ per word
Headline copy counts for 100%
Display Ads — \$2.50 per column inch

L&L TRUCKING
Pilger, NE
Local & Long Distance
Livestock & Grain Hauling
Lester Labenz
396-3368 or call toll free
800-672-8372

SAUTE TO PORK PRODUCERS!
Prices Good Dec. 8 through Dec. 13, 1983

Bulk - Mild Seasoned PORK SAUSAGE \$1.15 Lb.	Maple River Whole MINI HAMS \$1.79 Lb.
Fresh - Natural Casing PORK LINKS \$1.69 Lb.	Sliced - Slab BACON \$1.47 Lb.

Johnson's Frozen Foods
116 W. 3rd Wayne 375-1100
HOURS:
Mon.-Fri.
8 a.m.-6 p.m.
Saturday
8 a.m.-1 p.m.

Our Most Popular Premium Ever

Cannon blankets in blue, beige or gold. Offer good while supply lasts.

Luxurious Cannon Blankets
For any savings deposit of \$500.00 or more at Columbus Federal.

Cuddle up to these luxurious Cannon blankets. In our quick, these blankets are our most popular premium ever offered and won't last long!

FREE CANNON BLANKET
As a reward, a 72"x90" Cannon blanket will be yours free when you open or add to any savings account with \$500 or more. That's right...any savings account deposit qualifies: passbook savings, certificates of deposit, IRAs, or money market certificates. Get your blanket free when you deposit \$500 or more.

LAST CHANCE FOR RAINCHECKS
Cannon blankets are free to those who hold qualifying Columbus Federal premium rainchecks. So cash in your raincheck today. No rainchecks will be honored after Jan. 31, 1984. So add to your savings today at Columbus Federal Savings Bank where you'll discover fine Cannon blankets are only part of a new world of banking services.

Columbus Federal SAVINGS BANK
220 WEST 7th STREET • WAYNE, NE 68787 • 375-1114
AND IN COLUMBIUS, FREMONT, SEWARD AND YORK.

WAKO BUILDING & HOME CENTER
110 So. Logan - Wayne
375-2035

CHRISTMAS SALE

10.49 RC Fire Extinguisher for all classes of fires. Mounting bracket included. (E245-824)	37.88 Skil 7 1/4-inch Circular Saw. Aluminum housing, safety switch, safety guard stop, burnout protected motor. Cuts 2 3/8" at 90°, 1 3/8" at 45°. 5,300 rpm. Equipped with 7 1/2-inch combination blade and wrench. E030-176 #574
5.88 Fuller Plier Set with 8" slip joint plier and 10" groove joint plier Chrome plated. (4835-914)	11.99 4' Fluorescent Worklight with two 40w lamps, 6" cord, set of hanging chains. (K279-705)
8.88 Stanley Powerlock Tape Rule, 1" x 25" with handy belt clip. The perfect gift for Dad. (E133-491)	4.99 40 Piece 1/4" - 3/8" DRIVE COMBINATION SOCKET SET For home workshop or automotive repair. #73740. (E153-390)

REGISTER FOR FREE DRAWING EACH WEEK!

Anonymous

Letter Writer Asks... A queer twist in emotionalism found expression in an anonymous letter sent last week to the Norfolk Daily News...

The officers were sent here to direct essential training... A report was followed by the appointment of another committee...

If the anonymous writer's charge of wholesale opposition were based down to the actual truth, the result would undoubtedly reveal comparatively little...

One of the largest hauls was the 100-foot dredge bridge over of Walnutfield bridge southeast of Walnutfield...

Public Is Invited To Open Meeting... Wayne city council will hold a special meeting Monday evening to consider bills on the city charter...

Relative of Wayne Man Fatally Hurt... Bryan Graves, 47, Polk, brother-in-law of Prof. C. H. Landahl, was killed instantly when the truck he was driving struck a bridge near Omaha Thursday morning...

Staff Is Complete At Carroll School... Miss Anna Fredrickson who has been teaching primary in Carroll city school, has been transferred to the high school...

Region Emerges After Early Storm

Army Engineers Help in Salvage

Sioux City Caravan Here Collects Large Amount of Metal for War

Engineers from Sioux City Army base, helping Wayne county in the scrap drive for vital war materials last Thursday, collected about 70 tons of good metal...

College Training Program Grows

Army and navy air training in college of the county, has increased tremendously since it was instituted in 1940...

Invite Registrar To Help in Plans

Herman Baehr Plans To Go To Detroit Next Month For Post-War Plans

Herman Baehr, registrar at the county seat, has just been notified by the U. S. Office of Economic Warfare...

Public Is Invited To Open Meeting

Wayne city council will hold a special meeting Monday evening to consider bills on the city charter...

Relative of Wayne Man Fatally Hurt

Bryan Graves, 47, Polk, brother-in-law of Prof. C. H. Landahl, was killed instantly when the truck he was driving struck a bridge near Omaha Thursday morning...

Staff Is Complete At Carroll School

Miss Anna Fredrickson who has been teaching primary in Carroll city school, has been transferred to the high school...

Orchestra To Give RADIOPROGRAM

Five members of the orchestra of the army corps, will play over radio station WJAG, Norfolk, Friday afternoon at 4:45...

Tuesday Final Day To Apply for Place

Thursday of this week was the last day for filing applications for the local postmaster's office...

Garage at Pilger Is Robbed Friday

The Miller Chevrolet garage at Pilger was robbed Friday afternoon, about \$30 being taken...

Two Men in Car with Omaha License Are Suspected Of Looting Safe

The Miller Chevrolet garage at Pilger was robbed Friday afternoon, about \$30 being taken...

Invite Registrar To Help in Plans

Herman Baehr Plans To Go To Detroit Next Month For Post-War Plans

Herman Baehr, registrar at the county seat, has just been notified by the U. S. Office of Economic Warfare...

Public Is Invited To Open Meeting

Wayne city council will hold a special meeting Monday evening to consider bills on the city charter...

Relative of Wayne Man Fatally Hurt

Bryan Graves, 47, Polk, brother-in-law of Prof. C. H. Landahl, was killed instantly when the truck he was driving struck a bridge near Omaha Thursday morning...

Staff Is Complete At Carroll School

Miss Anna Fredrickson who has been teaching primary in Carroll city school, has been transferred to the high school...

Orchestra To Give RADIOPROGRAM

Five members of the orchestra of the army corps, will play over radio station WJAG, Norfolk, Friday afternoon at 4:45...

Passes Tuesday In Southern City

Funeral services will be conducted in Wayne for Mrs. W. A. Behl...

Invite Educators To Music Clinic

Music instructors of Third district, including about 100 schools, will convene at Wayne college Thursday and Friday, December 2 and 3...

United War Fund Drive Progresses

Wayne county has collected about \$4,999 of its quota of \$5,200 for the national war fund...

Mrs. Howard Fisher Is Chosen on Staff

Board of Education Plans To Secure Another for School Here Soon

Mrs. Howard Fisher of Chicago, former Margaret Jones of Wayne, has been engaged by Wayne school board to join the local staff...

Music Arranged For Armistice Day

The hand will present the program of music arranged for Armistice day comes on Thursday...

Eight Take Tests At Wayne College

Army and navy V-12 qualifying tests were held at Wayne college Tuesday afternoon...

Christmas Plans Are Going Forward

C. E. Nelson, chairman of the Chamber of Commerce Christmas committee, reports satisfactory progress in plans for holiday activities...

Rebuilding Highway No. 15 Is Finished

Wednesday of last week saw the finishing touches given the rebuilding of highway No. 15 south of Wayne...

Tactical Officer Joins Unit Staff

James M. Mason, a new tactical officer at Wayne college training detachment II and Mrs. Mason arrived here Sunday from Missouri...

Union Armistice Service Arranged

Women of Wayne churches plan a union armistice day service this Thursday at 2 in the Presbyterian church...

Invite Educators To Music Clinic

Music instructors of Third district, including about 100 schools, will convene at Wayne college Thursday and Friday, December 2 and 3...

United War Fund Drive Progresses

Wayne county has collected about \$4,999 of its quota of \$5,200 for the national war fund...

Mrs. Howard Fisher Is Chosen on Staff

Board of Education Plans To Secure Another for School Here Soon

Mrs. Howard Fisher of Chicago, former Margaret Jones of Wayne, has been engaged by Wayne school board to join the local staff...

Music Arranged For Armistice Day

The hand will present the program of music arranged for Armistice day comes on Thursday...

Eight Take Tests At Wayne College

Army and navy V-12 qualifying tests were held at Wayne college Tuesday afternoon...

Christmas Plans Are Going Forward

C. E. Nelson, chairman of the Chamber of Commerce Christmas committee, reports satisfactory progress in plans for holiday activities...

Rebuilding Highway No. 15 Is Finished

Wednesday of last week saw the finishing touches given the rebuilding of highway No. 15 south of Wayne...

Tactical Officer Joins Unit Staff

James M. Mason, a new tactical officer at Wayne college training detachment II and Mrs. Mason arrived here Sunday from Missouri...

Wind Piles Soft Snow Into Deep Banks Here

Activity Resumes After Being Halted by Blizzard Which Grips Six States Over Past Week-end

One of the most severe early winter blizzards in the history of this region gripped northeast Nebraska over the week-end...

United War Fund Drive Progresses

Wayne county has collected about \$4,999 of its quota of \$5,200 for the national war fund...

Mrs. Howard Fisher Is Chosen on Staff

Mrs. Howard Fisher of Chicago, former Margaret Jones of Wayne, has been engaged by Wayne school board to join the local staff...

Music Arranged For Armistice Day

The hand will present the program of music arranged for Armistice day comes on Thursday...

Eight Take Tests At Wayne College

Army and navy V-12 qualifying tests were held at Wayne college Tuesday afternoon...

Christmas Plans Are Going Forward

C. E. Nelson, chairman of the Chamber of Commerce Christmas committee, reports satisfactory progress in plans for holiday activities...

Rebuilding Highway No. 15 Is Finished

Wednesday of last week saw the finishing touches given the rebuilding of highway No. 15 south of Wayne...

Tactical Officer Joins Unit Staff

James M. Mason, a new tactical officer at Wayne college training detachment II and Mrs. Mason arrived here Sunday from Missouri...

INVITE VISITING ANVIATION YOUTH FOR THANKSGIVING... "DOING unto others" is a noble thought for Thanksgiving...

Chairman Asks Solicitors To Complete Reports By End of Week... Wayne county has collected about \$4,999 of its quota of \$5,200...

Blowing Out Starts... Clearing of highways started Monday night as 4000 tons of wind had subsided by Tuesday afternoon...

Speaks to Norfolk High School Boys... Capt. Milton E. Rose spoke to Norfolk High school boys Wednesday morning in a program designed to give youths information about various branches of service...

Business Generally Stops for Holiday... Public and private business is generally suspended today for the Armistice holiday...

BRIEF INDEX... Page Two - College Training School Kwanita Meeting... Page Three - Winisk... Page Four - Norfolk High School... Page Six - Society Churches... Page Six - Want Column... Section Two... Page One - Wayne School... Page Two - Early Days, Locals... Page Three - Rural Schools... Page Four - Carroll Northwest Wayne... Page Five - Southwest Wayne... Page Six - Northeast Wayne... Page Seven - Altona... Edward Hyde, resident of Elm 62 years, dropped dead...

Serving Wayne & Surrounding Counties Since 1892 The State National Bank and Trust Company Wayne, NB 68787 • 402-375-1130 • Member FDIC Main Bank 122 Main • Drive-In Bank 10th & Main SEE US FOR YOUR COMPLETE SAVINGS INVESTMENT PLANS!

